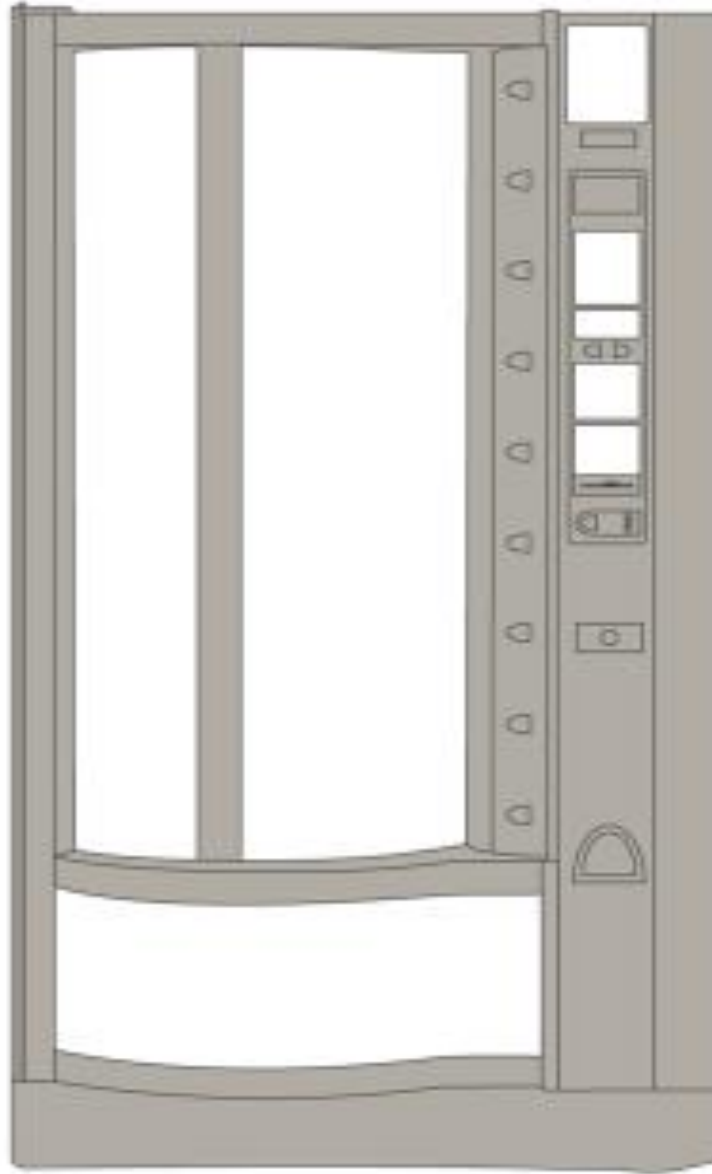


CRANE MERCHANDISING SYSTEMS

Shopper Revolution

Parts Manual Models 432 & 962



Crane Merchandising Systems
3330 CRANE WAY
WILLISTON, SC 29853
www.cranems.com

HOW TO ORDER PARTS

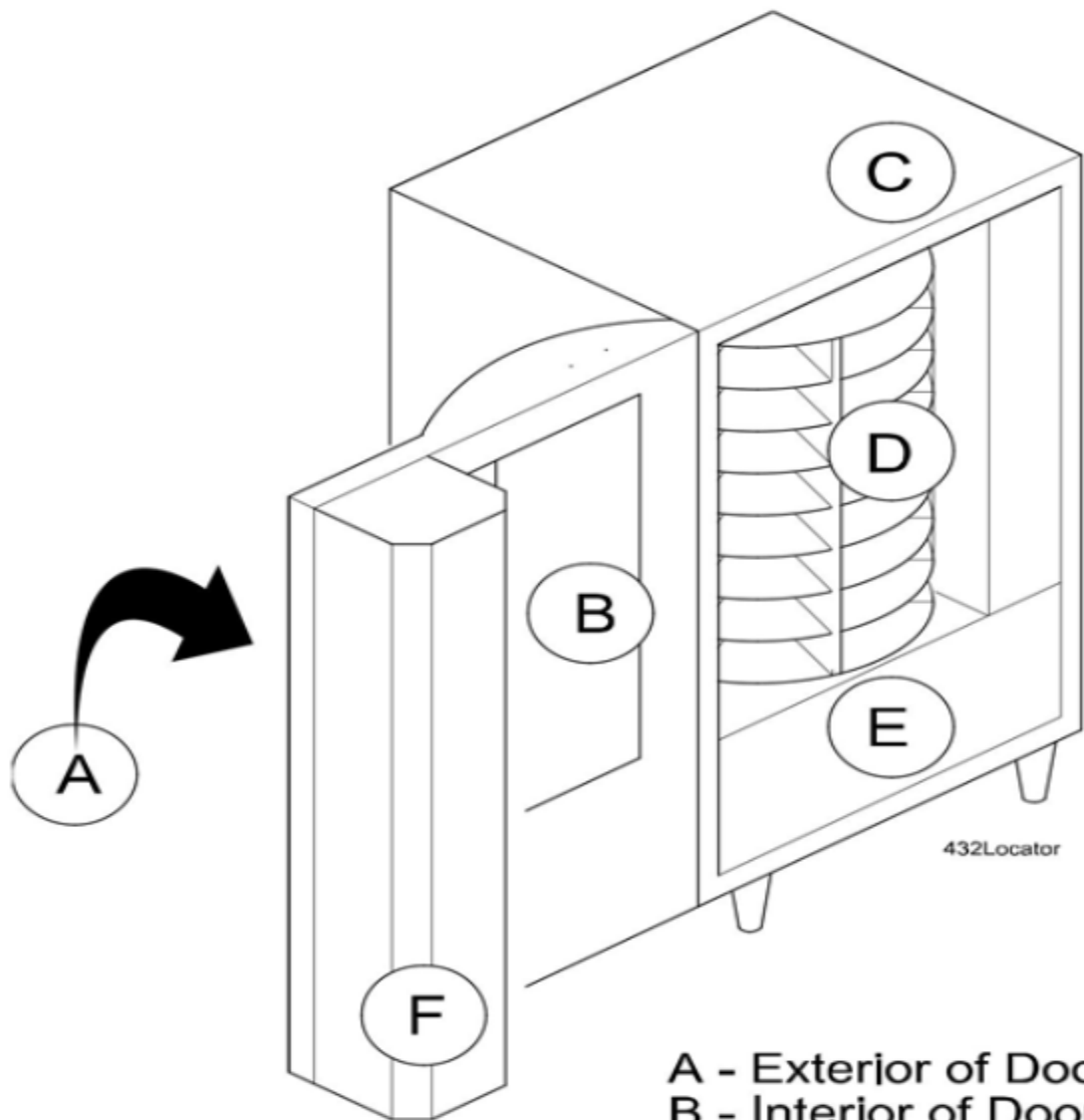
1. Refer to the machine breakdown above. Each assembly breakdown contains an item description and page location in this manual.
2. Determine part number(s) needed by referring to drawing of part. Locate item number from drawing and refer to item number, part number and description.
3. Complete your parts order, double check part numbers and quantities. Include a call back number in the event there is a question regarding your order. Fax, email, or mail your order to Crane Merchandising Systems or place your order online at www.cranems.com.
4. Specify how you would like your order to ship. If you do not specify, we will ship the most economical way. In the case of warranty replacements, we reserve the right to determine the method of shipment.

Should you have questions pertaining to this manual or the vendor, please contact Crane Merchandising Systems or write directly to:

Crane Merchandising Systems
3330 Crane Way
Williston, SC 29853
800.688.9090 or 800.621.7278
803.266.5051 (fax)
www.cranems.com

Table of Contents

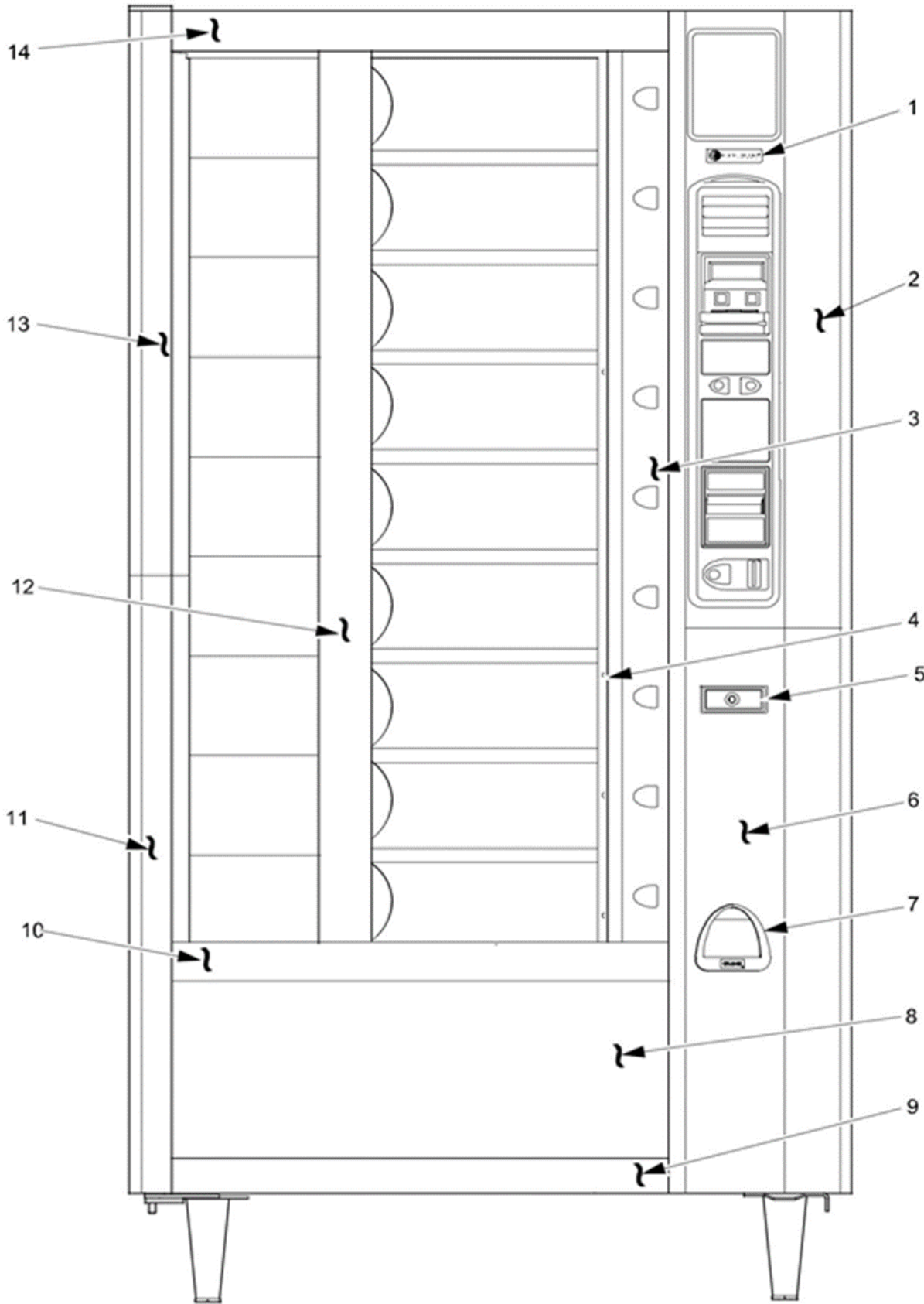
Exterior of Door.....	5
DOOR TRIM	5
DOOR HINGE ASSEMBLIES	7
Interior of Door	8
DOOR GLASS AND MISC. INTERIOR PARTS.....	8
LIGHT ASSEMBLY	10
LED LIGHTING ASSEMBLY (OPTIONAL).....	12
MAIN CONTROLLER & ACCESS PANEL STOP	14
MANUAL VEND GUIDE ASSEMBLY (MANUAL & AUTO)	16
POWER VEND GUIDE ASSEMBLY (TOP AND MIDDLE)	18
INTERIOR DOOR-MISCELLANEOUS PARTS.....	19
LOCK BAR ASSEMBLY.....	21
BRUSS BAR AND VEND DOOR LOCK	23
CABINET	24
LEG ASSEMBLIES AND AIR INLET/OUTLET SCREENS.....	24
BASE PLATE ACCESSORY	25
TURRET.....	26
TURRET- TOP	28
TURRET –BOTTOM	30
DRIVE MOTOR ASSEMBLY	32
STOP PIN ASSEMBLY.....	34
REFRIGERATION	36
REFRIGERATION COMPONENTS.....	36
EVAPORATOR MOTOR ASSEMBLY & CABINET INTERIOR.....	38
MONETARY PANEL	40
UPPER MONETARY	42
INTERIOR MONETARY	44
MONETARY OPTIONS & COIN BOX.....	45
MISCELLANEOUS.....	47
POWER PANEL ASSEMBLY 115V & 230V	47
WIRING DIAGRAM AND HARNESSING	49



- A - Exterior of Door
- B - Interior of Door
- C - Cabinet
- D - Turret
- E - Refrigeration
- F - Monetary
- G - Miscellaneous

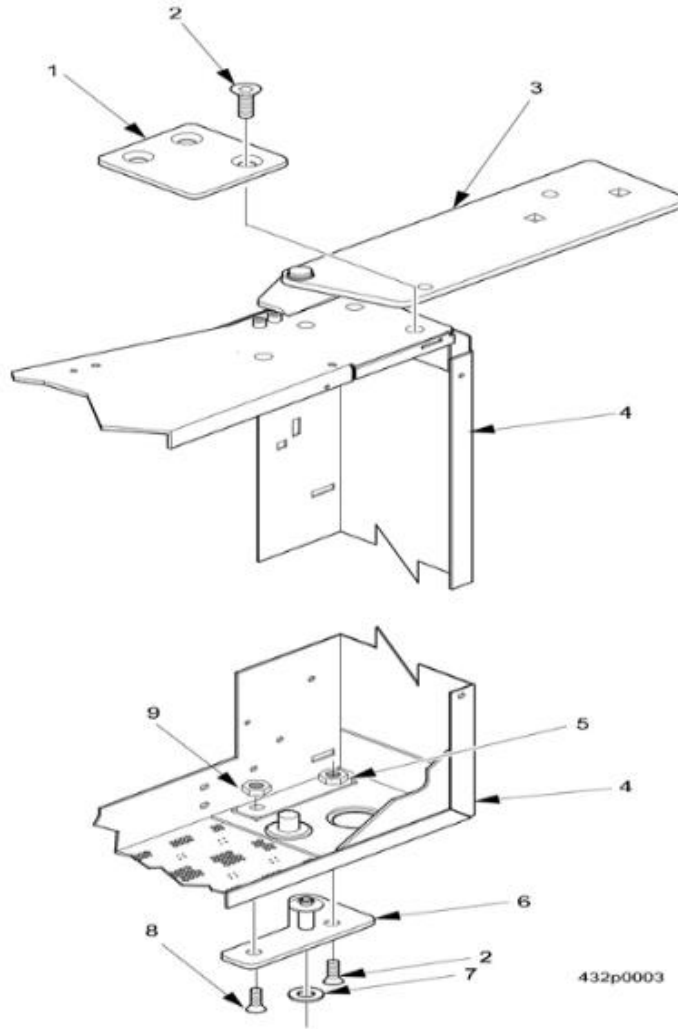
Exterior of Door

DOOR TRIM



DOOR TRIM				
INDEX	BLACK	PLATINUM	DESCRIPTION	QTY
1	103611	103611	PLATE - NV LOGO - 432	1
	104158	104158	PLATE - AP LOGO	1
2	103650	103675	PANEL - TRIM - TOP ACCESS	1
	103768	103768	#6-19 X .38 PHIL PHS T/C (HARDWARE FOR MOUNTING)	6
3	111187	111188	WELD ASSEMBLY-ACCESS PANEL	1
4	103661	106539	TRIM - SIDE - ACCESS PANEL	1
5	103612	103265	LOCK ASSEMBLY - "T"	1
6	106515	103676	PANEL - TRIM - BOTTOM - ACCESS	1
	103768	103768	#6-19 X .38 PHIL PHS T/C (HARDWARE FOR MOUNTING)	6
7	103654	106538	BEZEL - COIN RETURN CUP	1
8	103626	103626	POP-LARGE-GRAPHICS (FRUIT)	1
	103638	103638	PANEL POP-LARGE-HDPE (BLACK)	1
9	103603	103640	TRIM - HORIZONTAL - LOWER S - CURVE	1
	103768	103768	SCREW (HARDWARE FOR MOUNTING)	3
10	103604	106498	TRIM - HORIZONTAL - MID S - CURVE	1
	103731	103731	RETAINER DOOR TRIM (HARDWARE FOR MOUNTING)	4
	103768	103768	#6-19 X .38 PHIL PHS T/C (HARDWARE FOR MOUNTING)	4
11	103606	103642	TRIM - LEFT VERTICAL - LOWER	1
	103731	103731	RETAINER DOOR TRIM (HARDWARE FOR MOUNTING)	5
	103768	103768	#6-19 X .38 PHIL PHS T/C (HARDWARE FOR MOUNTING)	1
12	106479	103643	TRIM - POST - CENTER	1
	103145	103145	#8-18 X 1.25 RND HD PHIL (HARDWARE FOR MOUNTING)	4
13	103602	103639	TRIM - LEFT VERTICAL - UPPER	1
	103731	103731	RETAINER DOOR TRIM (HARDWARE FOR MOUNTING)	5
14	103605	103641	TRIM - HORIZONTAL - UPPER - CURVE	1
	103731	103731	RETAINER DOOR TRIM (HARDWARE FOR MOUNTING)	2
	103126	103126	SCREW #8-32X.31 HEX HD (HARDWARE FOR MOUNTING)	4
	103667	103667	UPPER GRAPHICS	1

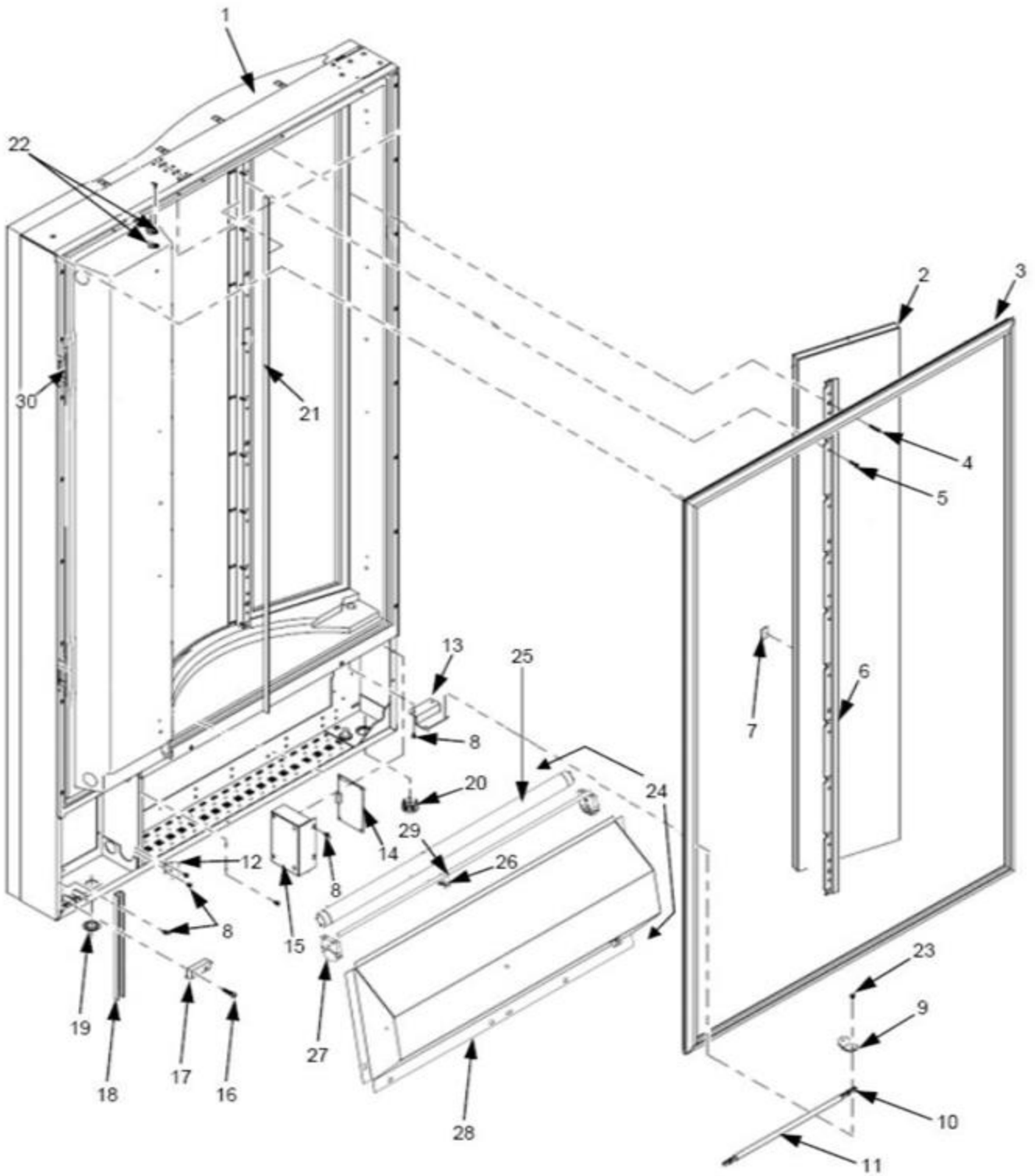
DOOR HINGE ASSEMBLIES



DOOR HINGE ASSEMBLIES				
ITEM	BLACK	PLATINUM	DESCRIPTION	QTY
1	106472	106472	PLATE - CLAMP - HINGE - TOP	1
2	103834	103834	SCREW - 5/16 - 18X.75 FLAT HEAD SOCKET	5
3	100141	100141	HINGE ASSEMBLY - DOOR - TOP (Welded to cabinet assembly)	1
4	112824	112829	FOAMED DOOR ASSY	1
5	103833	103833	PLATE ASSEMBLY - HINGE MOUNTING	1
6	103598	103598	HINGE & PIN ASSEMBLY - DOOR BOTTOM	1
7	103519	103519	BEARING-THRUST LOWER HINGE	1
8	108069	108069	WELD SCREW-#1/4-20 X 1"LG	1
9	103119	103119	NUT-1/4-20 WHIZ-LOCK	1

Interior of Door

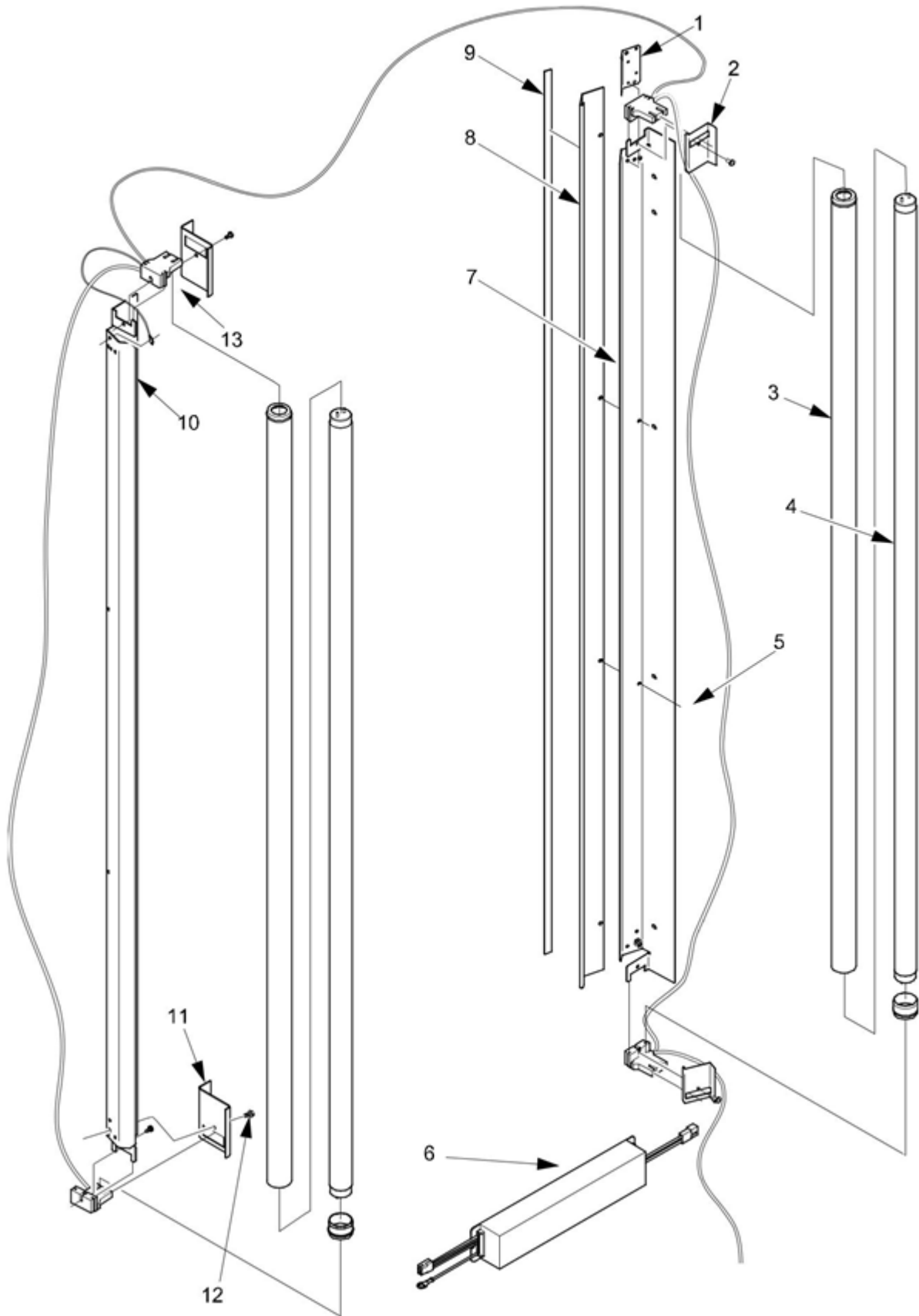
DOOR GLASS AND MISC. INTERIOR PARTS



DOOR GLASS AND MISC. INTERIOR PARTS

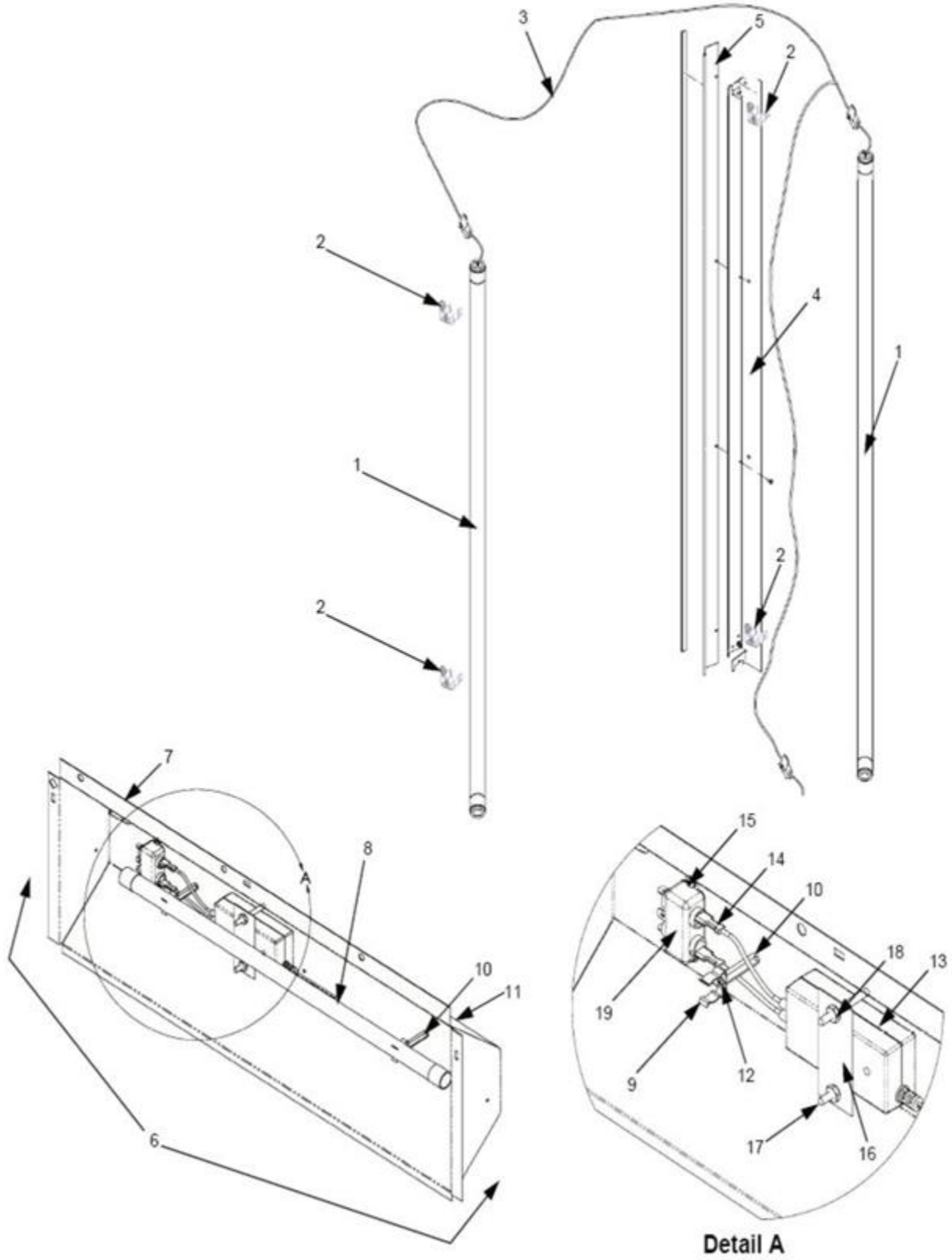
INDEX	PART NUMBER	DESCRIPTION	QTY
1	112824	FOAMED DOOR ASSEMBLY - BLACK/BLACK	-----
	112829	FOAMED DOOR ASSEMBLY - PLAT/BLACK	-----
2	103597	GLASS ASSEMBLY - INSULATED - 24 VAC	1
3	103596	GASKET - DOOR - BLACK	1
4	103145	SCREW - #8-18 X 1 1/4 RHP TAPP	4
5	103174	SCREW - #8-18 X.75 PLASTITE HH	60
6	111746	REINF. - POST - CENTER - BLACK	1
7	103729	TAPE-VHB-62 MIL X .6 WIDE	120"
8	103126	SCREW - #8-32X.31 HEX HD.TF-BL	38
9	103528	BRACKET - DOOR CHAIN	1
10	112837	CHAIN - SASH - 13.8 LONG	1
11	112836	COVER - CHAIN	1
12	111184	PLATE-STRIKE-PWR. PNL.	1
13	103621	BRACKET - CHAIN - DOOR	1
14	103681	PCB ASSEMBLY - INTERFACE	1
15	111183	COVER - ELECTRIC - 1/O BOARD	1
16	106418	SCREW - #8-18 X 1 1/4 RHP TAPPING	2
17	103630	GLIDE - DOOR	1
18	103573	CHANNEL - SUPPORT - DOOR	1
19	105619	PLUG - HOLE	1
20	106401	PLUG - FOAMING HOLE	1
21	103608	TAPE - SPONGE - .42 X .19	1
22	103632	COVER WIRE GUIDE	2
23	100246	SCREW-#8-32 X .50 HX.HD.-T/F-B	4
24	108187	LAMP ASSY-P.O.P.-115V-FLUOR (See page 11 for LED Assembly)	1
25	104041	LAMP-FLUORESCENT-17 WATT	1
26	103126	SCREW-#8-32X.31 HEX HD.TF-BLK.	16
27	106563	HARNESS-POP LAMP	1
28	111178	PANEL-LAMP-POP-115V	1
29	100863	RETAINER-HARNESS	1
30	103631	GUARD-GASKET	2
NS	106561	HARNESS - POP LAMP	1

LIGHT ASSEMBLY



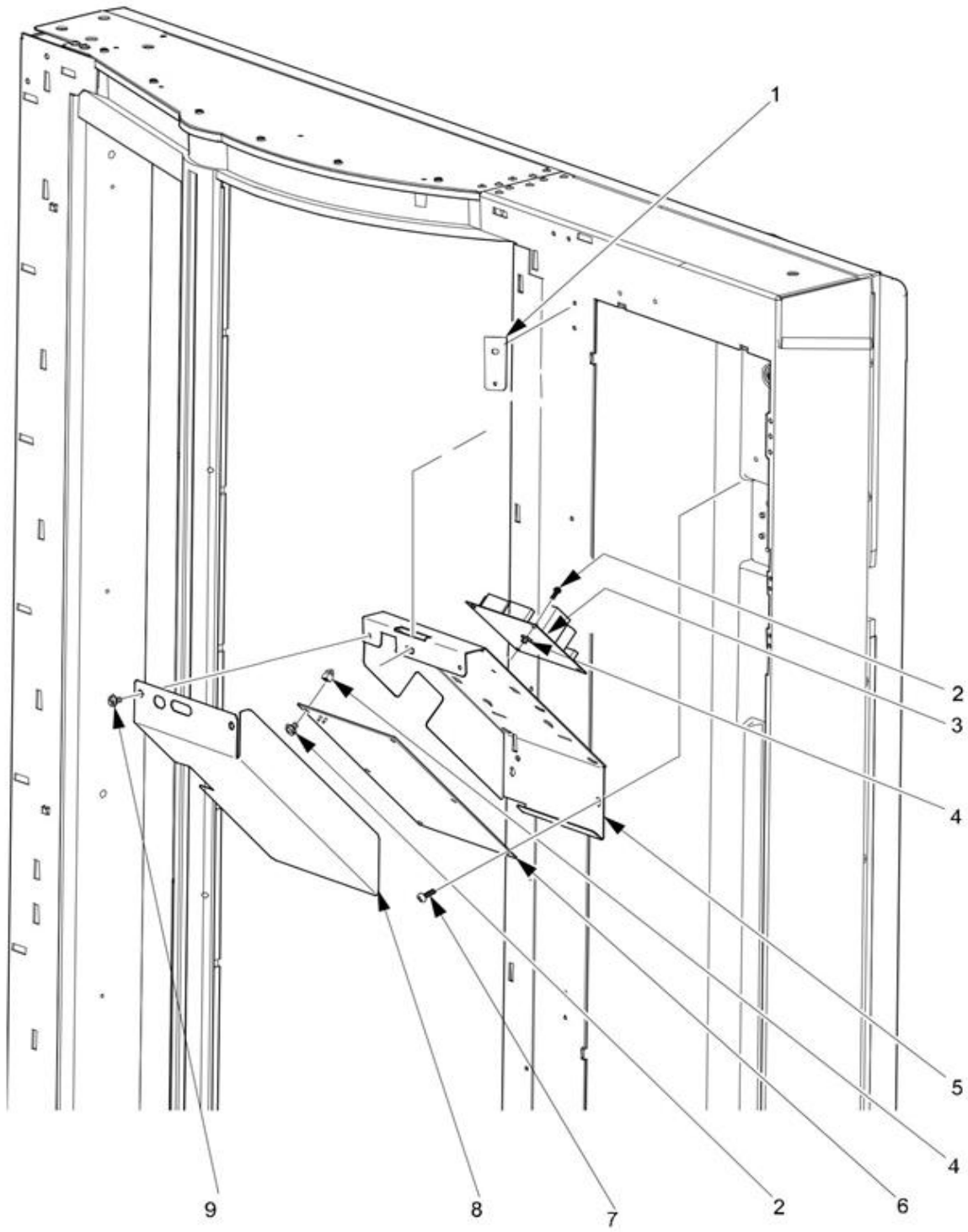
LIGHT ASSEMBLY				
INDEX	115V	230V	DESCRIPTION	QTY
-----	N/A	N/A	LAMP ASSEMBLY - FLUORESCENT	-----
1	N/A	N/A	SHIELD- UPPER WIRING FOR LAMP	-----
2	111180		COVER- UPPER WIRING FOR LAMP	2
3	103601	107281	SAFETY LAMP W/END CAPS	2
4	106477	106484	LAMP-FLUORESCENT	4
5	100863	100863	RETAINER-HARNESS	4
6	107992	107111	BALLAST-ASSEMBLY-ELECTRONIC	1
7	112982	112982	ASSY-LAMP SHIELD BRACKET	1
8	103629	103629	PANEL-TRIM-LAMP	1
9	103767	103767	GASKET-.19X.38	50.37
10	106447	108074	ASSY-BRACKET, LAMP	1
11	106490	106490	COVER-LOWER, WIRING, LAMP	2
12	105637	105637	SCREW-#6-32 X 5/16-RHS-W/LKW	4
13	N/A	110545	HARNESS - LAMP TO BALLAST	1
NS	103207	103207	FILTER, FLST LIGHT 120/230V	1
NS	106233	106233	STARTER FLUORESCENT LAMP	2
NS	106440	106440	STARTER SOCKET ASSY	1
NS	106558	106558	HARNESS-POP-BALLAST	1
NS	106485	106485	COVER-BALLAST-POP	

LED LIGHTING ASSEMBLY (OPTIONAL)



LED LIGHTING ASSEMBLY			
INDEX	PART NUMBER	DESCRIPTION	QTY
----	106447	KIT LED W/ POP 120/230V	-----
1	104349	ASSY-48 LED-1200MM	2
2	103198	ASSY-MTG-CLIP-ADJ-LED	4
3	104351	HARNESS-LED-LIGHTING	1
4	111727	LED SUPPORT BRACKET	1
5	103629	PANEL BLACK TRIM LAMP	1
6	108186	LAMP ASSY-POP-115/230V-LED	1
7	111178	PANEL-LAMP-POP-115V	1
8	102445	ASSY-24 LED-500MM	1
9	100069	CLIP-SPRING STEEL-LED	2
10	-----	HEX STANDOFF (Not sold separately)	2
11	111984	4-40 KEPS W/EXT L/WAS H ZP	2
12	105792	SCREW-#4-40 X 1/4 RHS	2
13	106100	POWER SUPPLY 24VDC	1
14	100676	HARNESS-SMPS PWR ADAPTER	1
15	107757	#8-32X5/16 RHS SEMS MACH	2
16	111449	LED POWER SUPPLY- MTG PLATE	1
17	108188	SCREW-#10-32 X 1.75 PHS	2
18	111982	NUT #10-32 KEPS ZINC PLATE	2
19	100703	FILTER-LIGHT	1
NS	103716	HARNESS-PWR-LED FILTER (NOT SHOWN)	1
NS	104437	HARNESS LED LIGHT	1
NS	107785	GROUND WIRE 14 IN.	1
NS	107983	115/230V LED DOOR ASSY	
NS	108074	LAMP SHIELD ASSY,BRACKET	

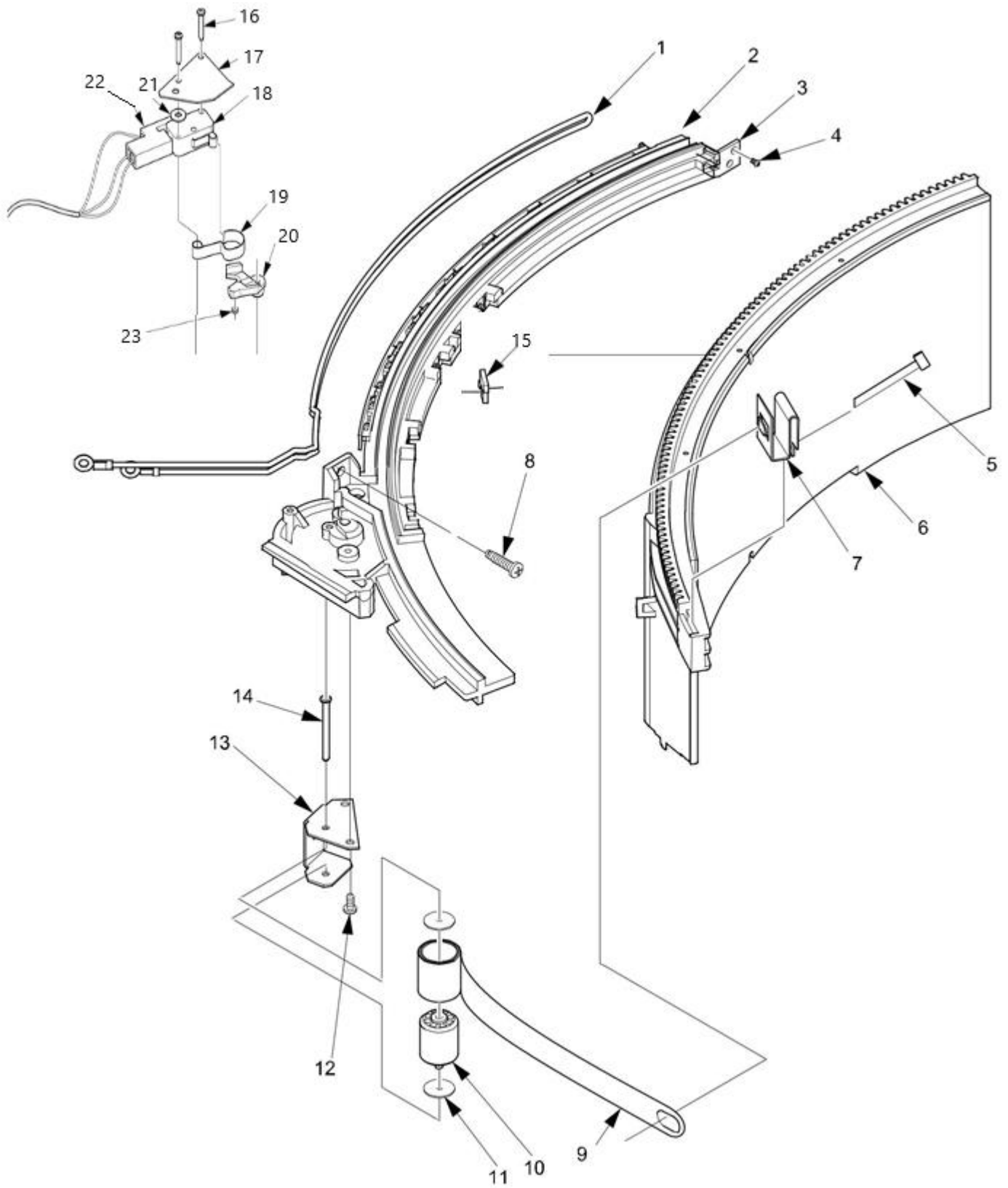
MAIN CONTROLLER & ACCESS PANEL STOP



MAIN CONTROLLER & ACCESS PANEL STOP

INDEX	PART NUMBER	DESCRIPTION	QTY
1	111208	PLATE-CONTROLLER BOARD MOUNT	1
2	100240	SCREW-#8-18 X .62 HEX/WH.	2
-----	106451	KIT, DOOR SOLENOID W/O MOTOR (replacement of part # 106542-Qty 9)	-----
	103637	SOLENOID DELTROL LOCK (part of the kit 106451)	1
3	103683	PCB ASSY SOLENOID W/O MOTOR	1
4	106309	SPACER, LINER .375LG X.500 DIA	2
5	103669	HOUSING, MAIN CONTROLLER BOARD	1
6	103684	MAIN CONTROLLER PCB W/O EPROM	1
	110891	VERSION 432.10 DOMESTIC (Current software as of 10/2020)	1
7	100243	SCREW-#8-10 X.5 T/F-PHS	2
8	103668	COVER MAIN CONTROLR BRD	1
9	103126	SCREW #8-32X.31 HEX HD	2

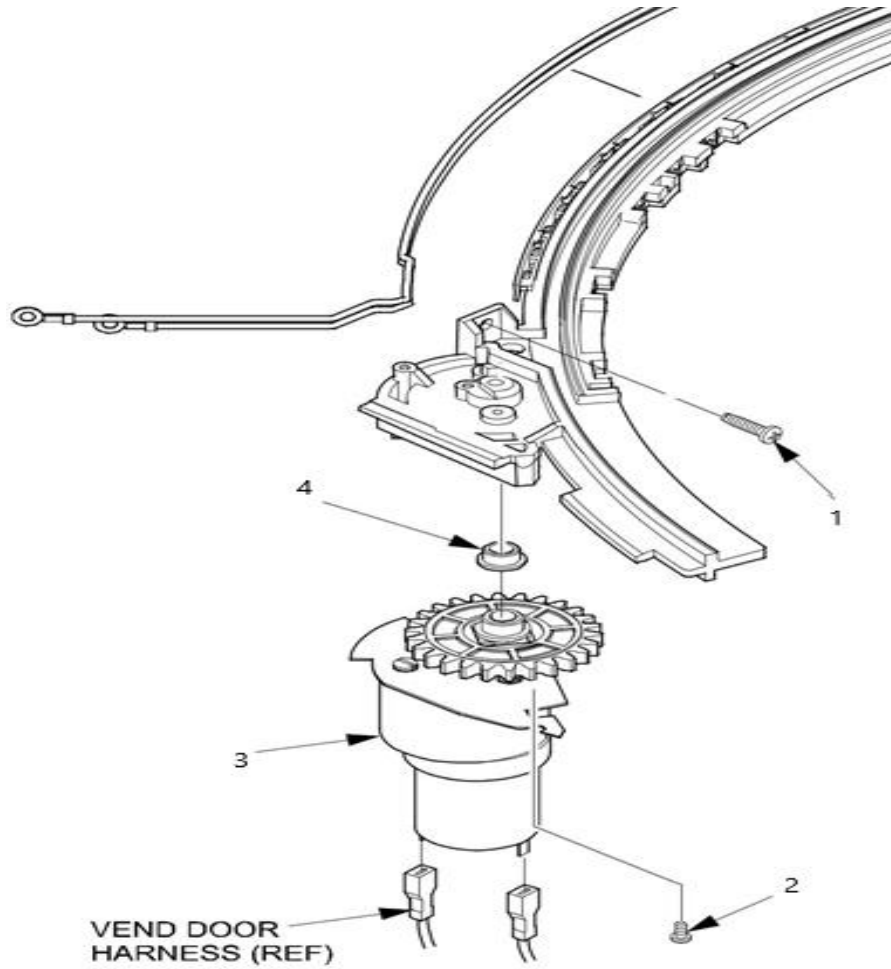
MANUAL VEND GUIDE ASSEMBLY (MANUAL & AUTO)



MANUAL VEND GUIDE ASSEMBLY (MANUAL & AUTO)

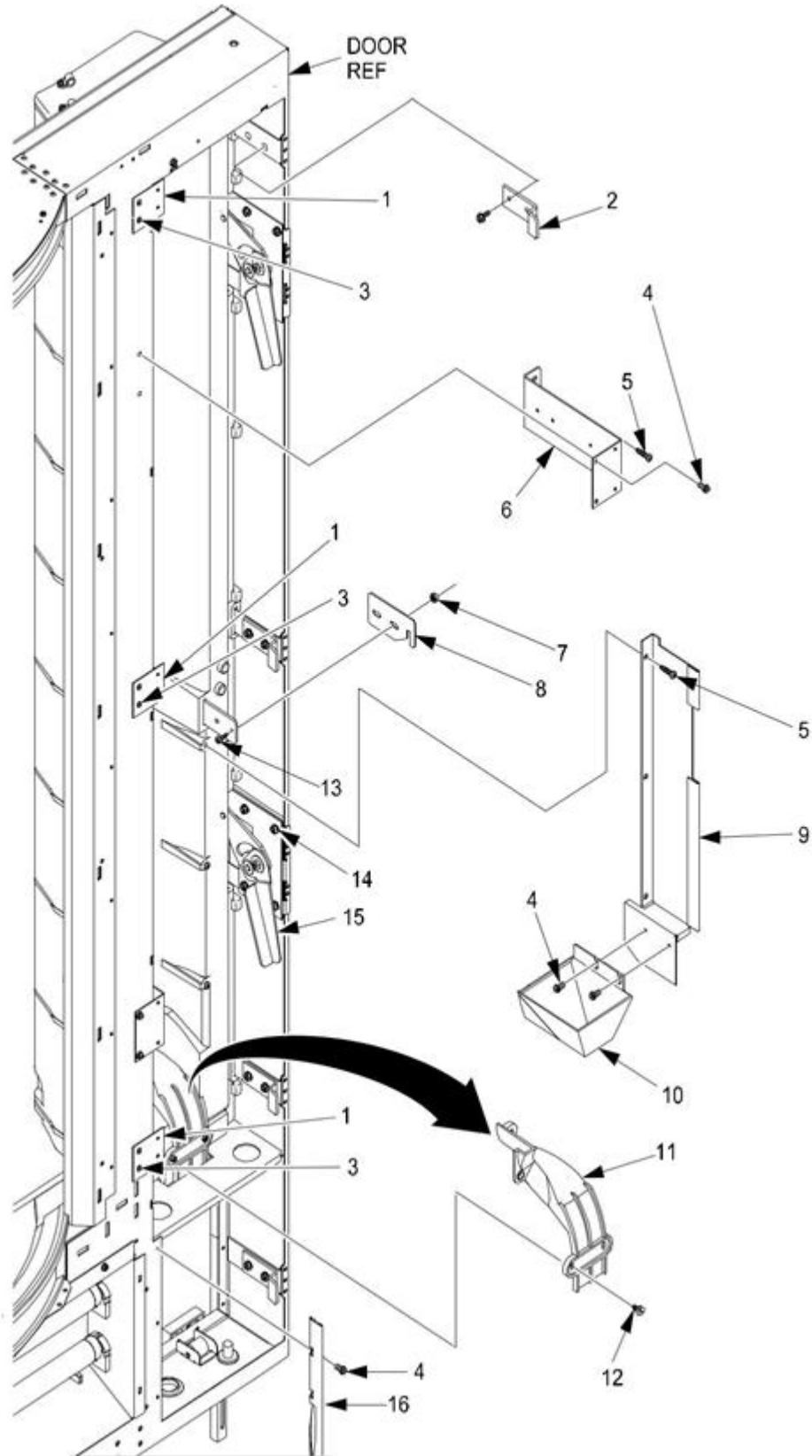
INDEX	TOP	MIDDLE	BOTTOM	DESCRIPTION	QTY
-----	107174	107330	107650	GUIDE ASSEMBLY - VEND - BOTTOM	-----
-----	112822	112822	112822	GUIDE & HEATER ASSEMBLY - VEND (ITEMS 1-2)	-----
1	103678	103678	103678	WIRE & TERMINAL ASSEMBLY - HEATER DOOR - 24 V	1
2	103599	103599	103599	GUIDE - DOOR - VEND	1
3	103617	103617	103617	RETAINER - GUIDE	1
4	103133	103133	103133	SCREW - #6-32 X .25 PHS T/C	2
5	100512	100512	100512	WIRE TIE-#PLT1M-M20	1
6	103616	103616	103616	WELD ASSEMBLY - VEND DOOR	1
7	103618	103618	103618	HOLDER - SPRING - RETURN - MANUAL	1
8	103174	103174	103174	SCREW - #8-18 X.75 PLASTITE HHS	2
-----	112823	112823	----	SPRING & ROLLER ASSEMBLY-DOOR-RET (ITEM 9-14)	-----
9	103625	103625	Not Used	SPRING - DOOR	1
10	106464	106464	Not Used	ROLLER - SUPPORT - DOOR	1
11	106571	106571	Not Used	WASHER - VEND DOOR SPRING ASSEMBLY	2
12	103584	103584	Not Used	SCREW - #6-19 X .31 PHIL.PHS.T/C	2
13	103622	103622	Not Used	BRACKET - ROLLER - SPRING RETURN	1
14	103623	103623	Not Used	PIN - ROLLER	1
15	Not used	106494	106494	STOP - VEND - DOOR	
16	-----	106482	106482	SCREW-#3-24 X .62 PLASTITE-PN-	2
17	----	111177	111177	COVER-MICRO SWITCH	1
18	----	104055	104055	DOOR SWITCH-ROLLER LEVER	1
19	----	106481	106481	SPRING-SWITCH-DOOR-VEND	1
20	----	103624	103624	CAM-MICRO SWITCH	1
21	----	104049	104049	WASHER STEEL 3/8 X .147 X .031 (also mounting for heater)	2
22	----	103718	103718	HARNESS, VEND DOOR MANUAL	1
	----	103717	103717	HARNESS, VEND DOOR POWER	1
23	----	106487	106487	ROLLER-CAM-MICRO SWITCH	1
NS	----	106570	106570	JUMPER, MOTOR POWER	1
NS	----	103133	103133	SCREW-#6-32 X .25 PHS T/C (mounting to the heater)	1
NS	----	103620	103620	GEAR DRIVE VEND DOOR	1

POWER VEND GUIDE ASSEMBLY (TOP AND MIDDLE)



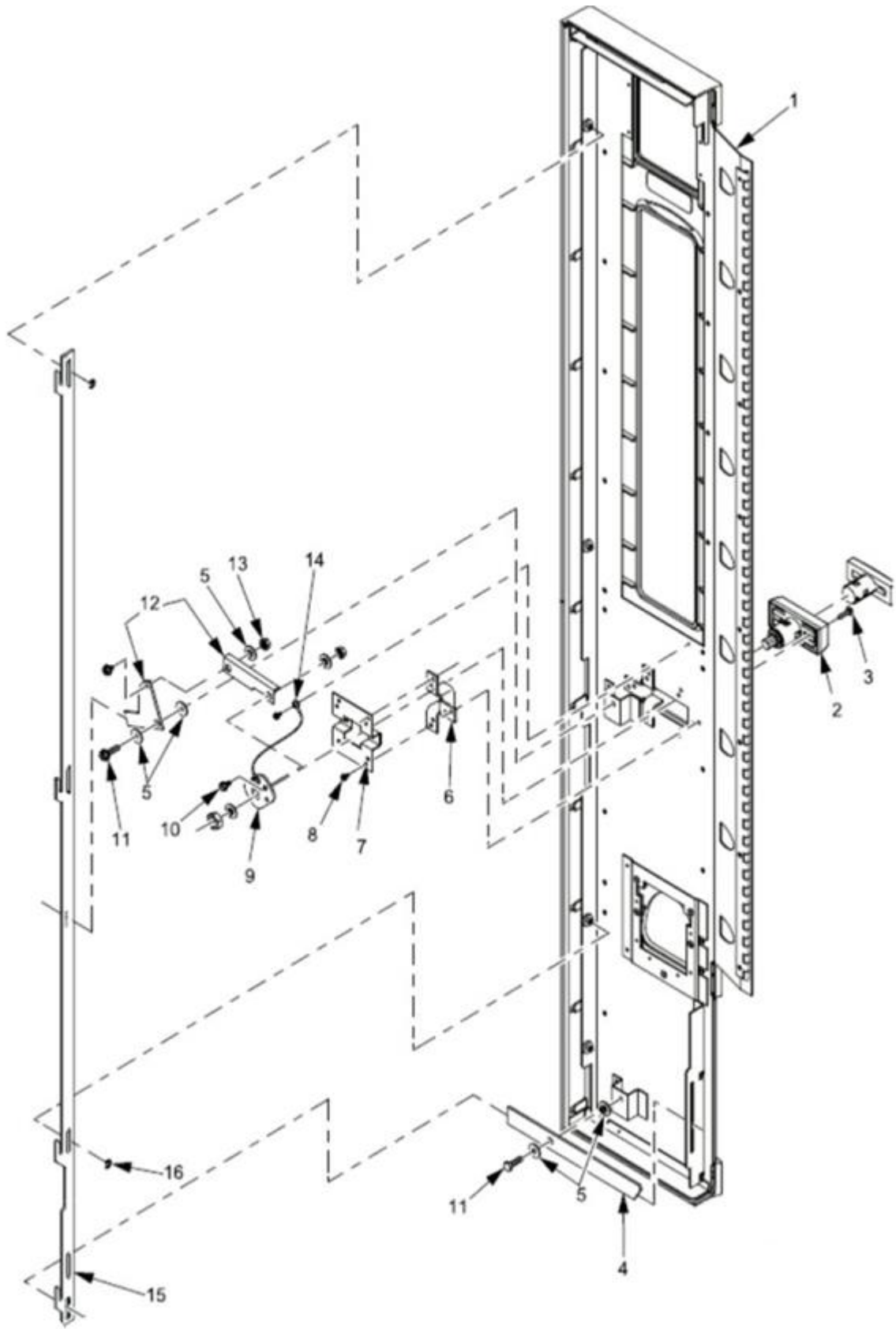
POWER VEND GUIDE ASSEMBLY (TOP AND MIDDLE)				
INDEX	TOP	MIDDLE	DESCRIPTION	QTY
1	103174	103174	SCREW - #8-18 X.75 PLASTITE HHS	1
2	103584	103584	SCREW - #6-19 X .31 PHIL.PHS.T/	1
3	112821	112821	MOTOR BRACKET & GEAR ASSEMBLY - VEND	1
4	103614	103614	BEARING - SHOULDER - BRONZE	1

INTERIOR DOOR-MISCELLANEOUS PARTS



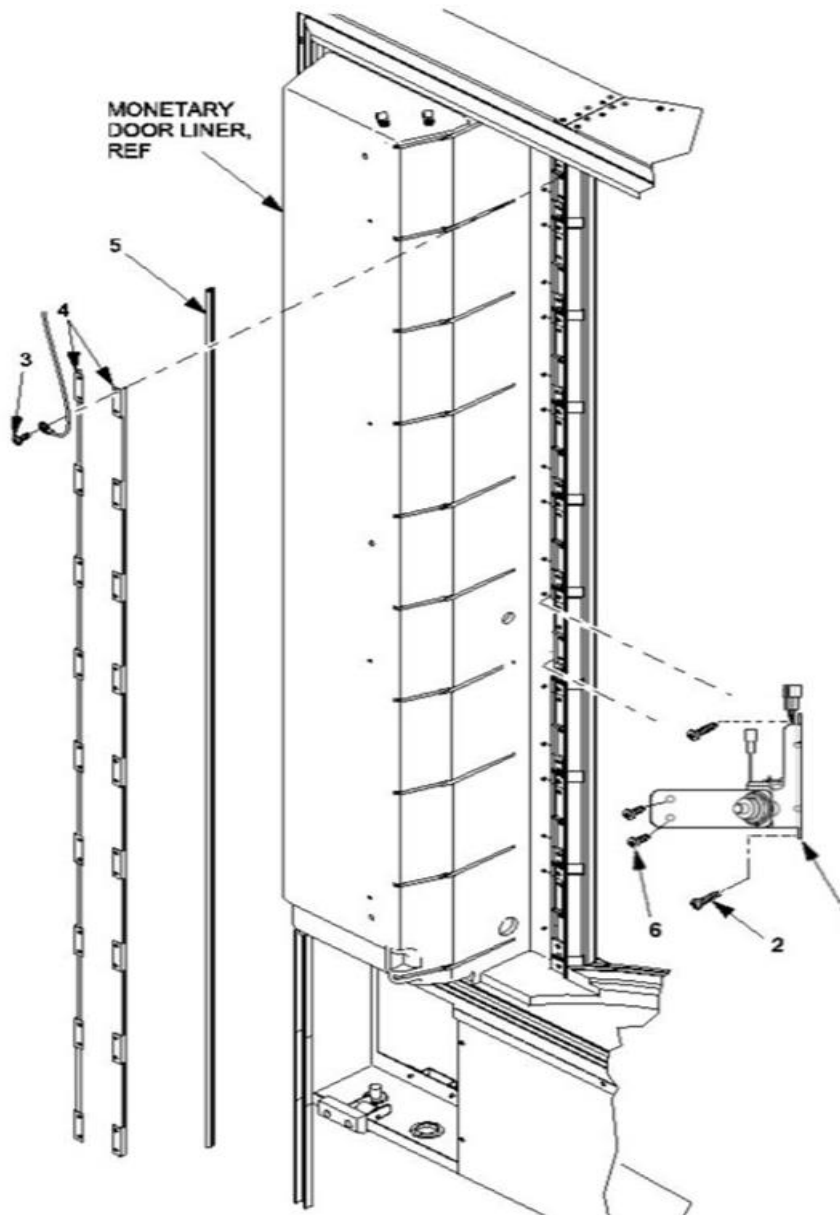
INTERIOR DOOR-MISCELLANEOUS PARTS			
INDEX	PART NUMBER	DESCRIPTION	QTY
1	111210	TAP PLATE-LATCH ARM	3
2	103600	MONETARY LATCH DOOR	4
3	100223	RIVET - POP - .125 DIA X .265	6
4	103126	SCREW - #8-32X.31 HEX HD.TF-BL	37
5	100243	SCREW- #8-18 X ,75 PLASTITE HH	3
6	103674	MONETARY SLIDE BRACKET	2
7	100153	NUT #8-32 KEPS ZINC PLATE	2
8	103664	ARM LOCK-MONETARY	1
9	111206	FILLER SIDE, MONETARY	1
10	103658	CHUTE-PAYOUT	1
11	103615	CHUTE- MONEY BOX	1
12	100243	SCREW - #8-10X.38 HEX HD.TF	3
13	103126	SCREW #8-32 X 9/16 P/H PHIL.	2
14	105784	SCREW - #10-32X3/8 ACORN HEX W	14
15	103636	LATCH/PLATE ASSEMBLY	2
16	106489	ANGLE-BACKUP, POP	1
NS	111176	BRACKET, MONETARY LATCH	1
NS	103112	#1801 MONEY BOX KA NV407	1
NS	103662	SPACER, MONETARY LOCK	1

LOCK BAR ASSEMBLY



LOCK BAR ASSEMBLY				
INDEX	BLACK	PLATINUM	DESCRIPTION	QTY
1	111187	111188	WELD ASSEMBLY - ACCESS PANEL	1
2	103612	103265	LOCK ASY "T"	1
3	103539	103539	CARRIAGE BOLT - #10-24 X 1.0	2
4	103666	103666	BAR - LOCK, LOWER	1
5	103843	103843	BUSHING	6
6	103663	103663	REINFORCEMENT - LOCK - SIDE	2
7	111201	111201	MOUNT - LOCK - ACCESS PANEL	1
8	100246	100246	SCREW - #8-32 X .50 HX.HD.-T	6
9	Not sold separately	Not sold separately	DRIVER-ACTUATOR LOCK GRD (only as part of 103672 - #12 below)	1
10	108070	108070	SCREW - 1/4-20 X .5 HEX HD	4
11	103114	103114	SCREW - 1/4 X 20 X 3/4 HEX HD	4
12	103672	103672	DRIVEN - ACTUATOR - LOCK	1
13	109462	109462	1/4-20 KEPS NUT EXT LW ZP	2
14	107839	107839	WIRE - GROUND - 5"	1
15	103671	103671	LOCKBAR	1
16	108233	108233	RETAINING RING REINF E TYP .250	7
NS	104975	104975	ANGLE, BLOCKING LOWER ACCESS	1

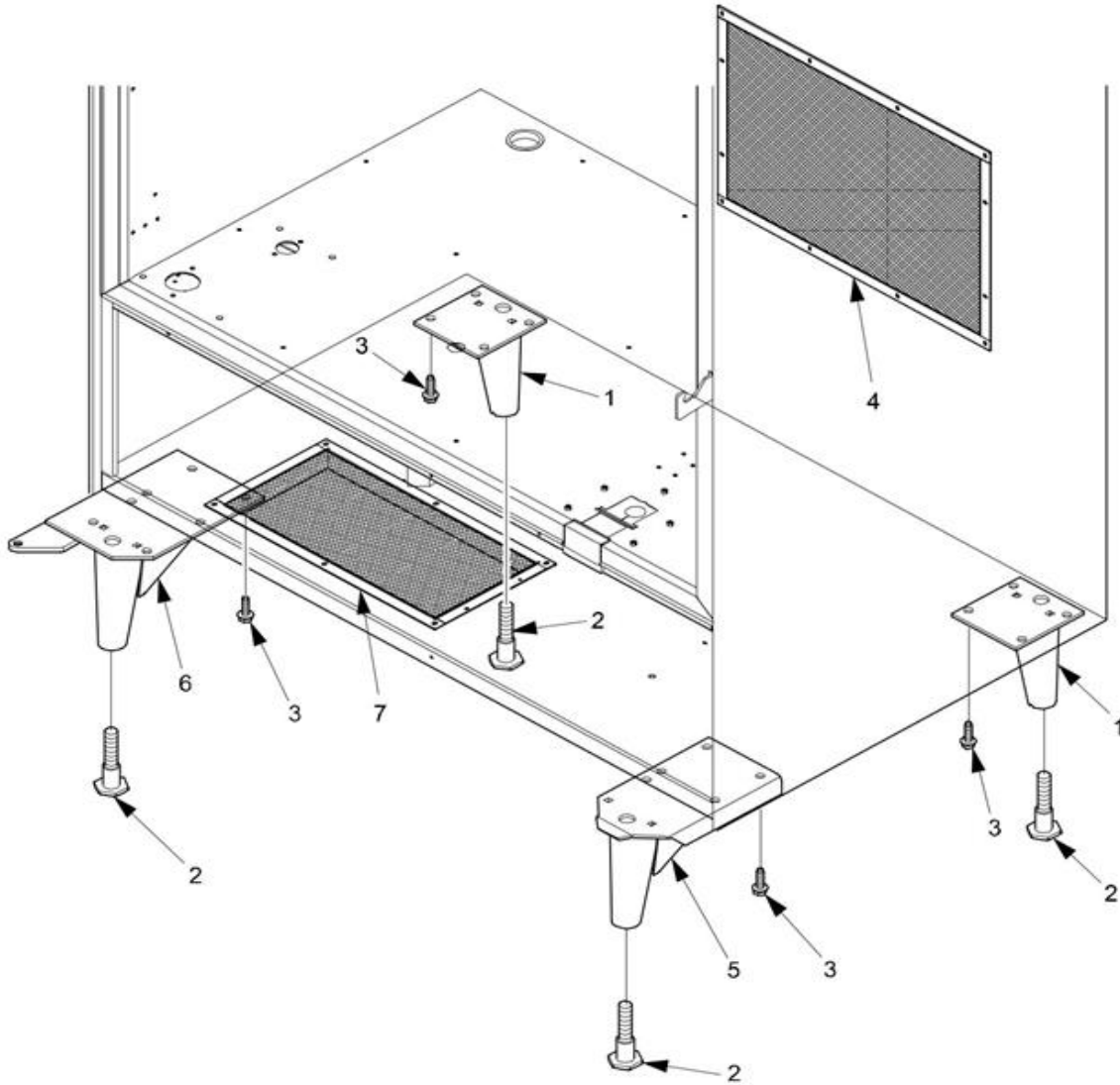
BRUSS BAR AND VEND DOOR LOCK



BRUSS BAR AND VEND DOOR LOCK			
INDEX	PART NUMBER	DESCRIPTION	QTY
1	103637	ASSY, VEND DOOR-SOLENOID DELTROL LOCK	9
2	103174	SCREW #8-18 X.75 PLASTITE HHS	18
3	106691	SCRW 8-18X1/2 HXHD SS SD	22
4	103679	BUSS BAR	2
5	103607	SEAL TUBE & DART	1
6	107959	SCRW 8-18X1/2 PH PAN	18

CABINET

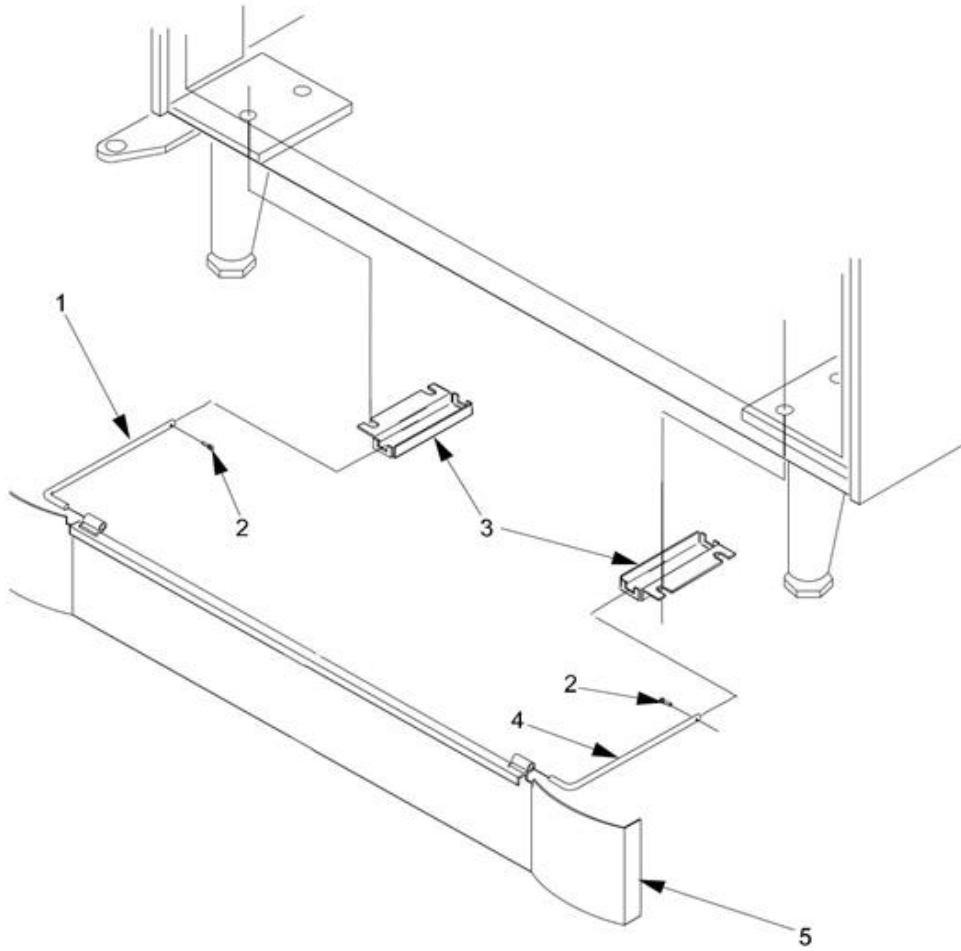
LEG ASSEMBLIES AND AIR INLET/OUTLET SCREENS



LEG ASSEMBLIES AND AIR INLET/ OUTLET SCREENS

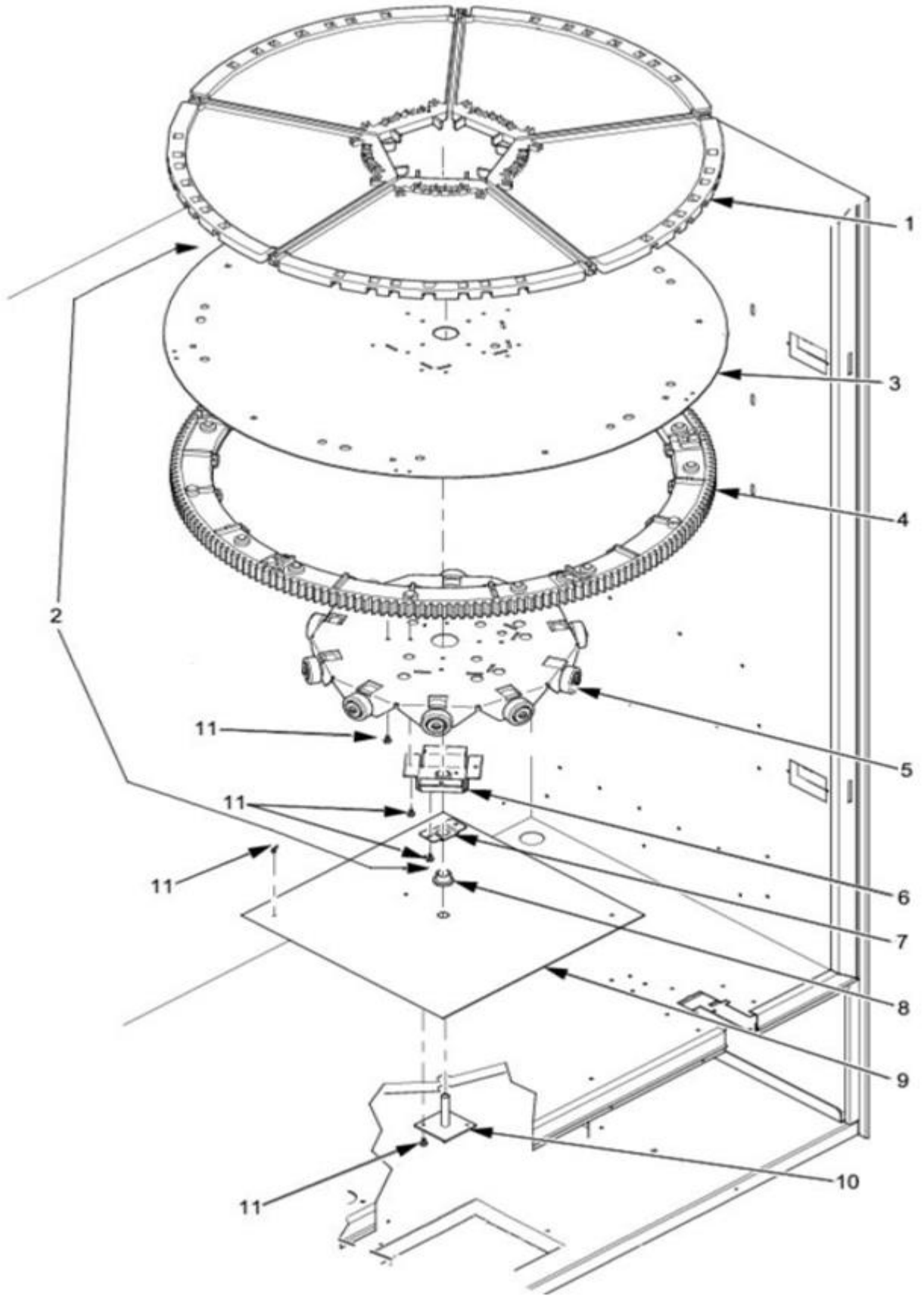
INDEX	PART NUMBER	DESCRIPTION	QTY
----	110820	LEVELER ASSY CABINET (contains item1 & 2)	----
1	111731	CABINET LEG ASSY	2
2	101290	LEVELER CABINET	4
3	100249	SCREW,5/16 X 1 W/LOCKING RING	16
----	110861	LEG & LEVELER ASSEMBLY - RIGHT FRONT (contains item 2 & 5)	----
4	103583	SCREEN - OUTLET AIR	1
5	109026	LEG ASSEMBLY - RIGHT FRONT	1
----	110867	LEG, HINGE & LEVELER ASSEMBLY	----
6	106458	PLATE ASSEMBLY - LEG & HINGE	1
7	103582	SCREEN - INLET AIR	1

BASE PLATE ACCESSORY



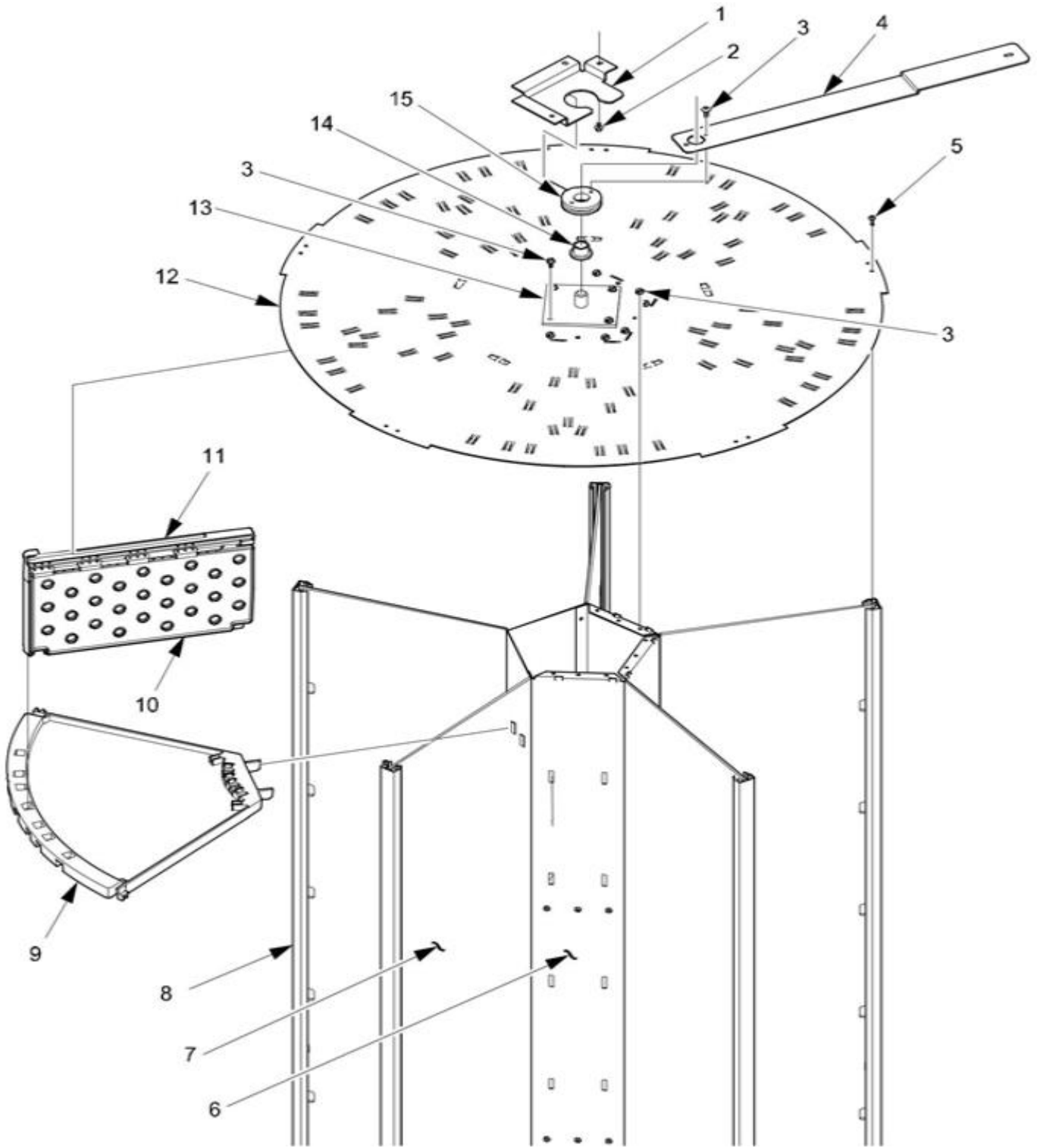
BASE PLATE ACCESSORY			
INDEX	PART NUMBER	DESCRIPTION	QTY
----	106409	BASE PLATE & ASSY 38 IN MILL	----
1	103727	BASE PLATE LEFT HAND	1
2	105646	COTTER PIN 3/32 X 3/4 IN	2
3	111778	BASE PLATE BRACKET	2
4	103728	BASE PLATE-RIGHT HAND	1
5	111444	38IN MILLENNIA ASSY	1

TURRET



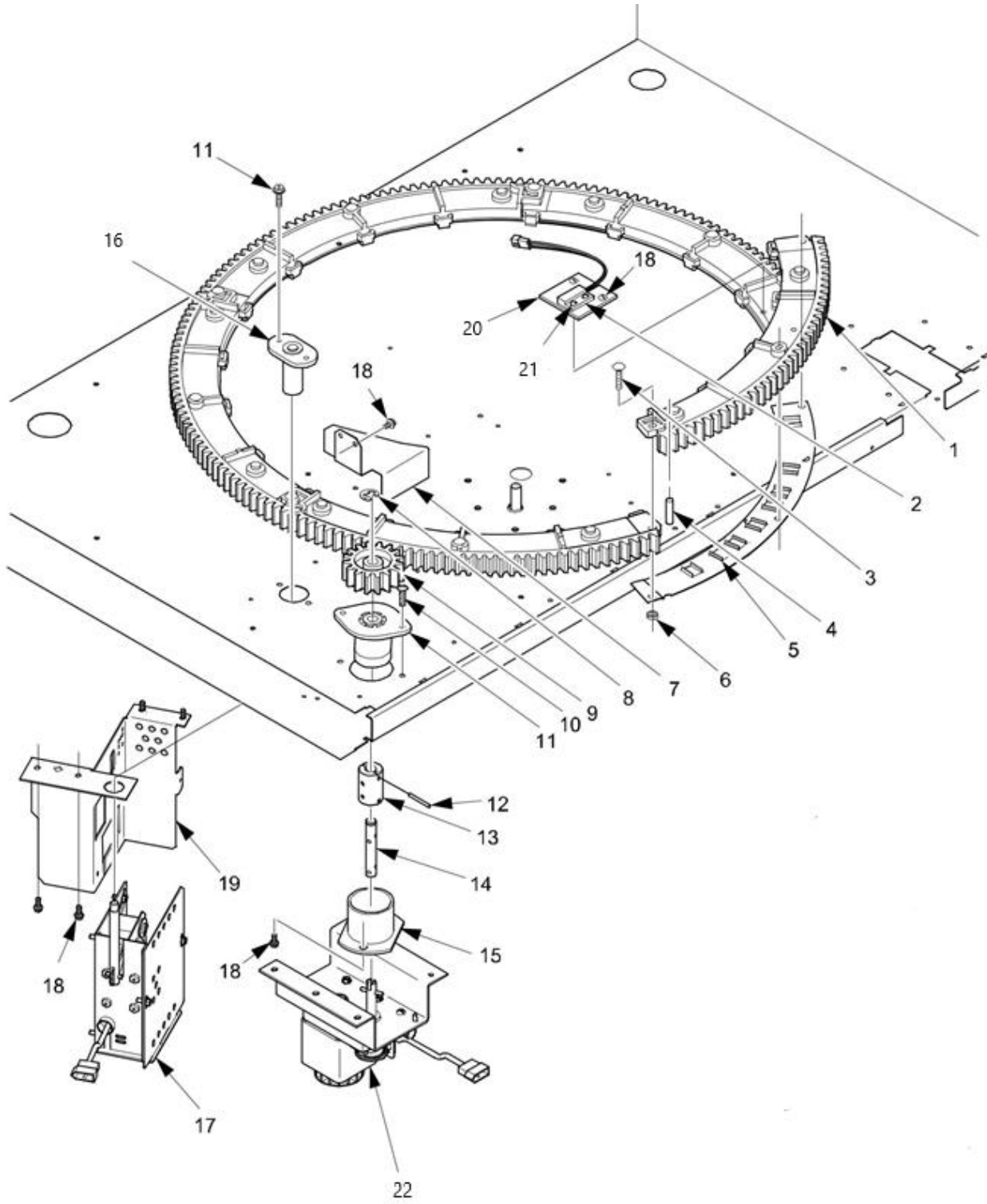
TURRET			
INDEX	PART NUMBER	DESCRIPTION	QTY
----	108172	BLACK STANDARD TURRET	----
1	103696	PRODUCT SHELF	45
2	103702	BOTTOM BASE ASSY (contains index 3-7)	1
3	-----	BASE ASSY (Sold only as index 2)	----
4	103685	GEAR SECTION 5 SEGMENT	5
5	----	PLATE ASSEMBLY-ROLLER SUPPORT (Sold only as index 2)	----
6	----	PLATE & BUSHING ASSEMBLY-SUPPORT (Sold only as index 2)	----
7	N/A	RETAINER-BUSHING	---
8	106411	BEARING - FLANGED - OILITE FB810-4	1
9	103688	PLATE - ROLLER BEARING	1
10	103690	PLATE ASSEMBLY - SHAFT & MOUNTING	1
11	103126	SCREW #8-32X.31 HEX HD	24

TURRET-TOP



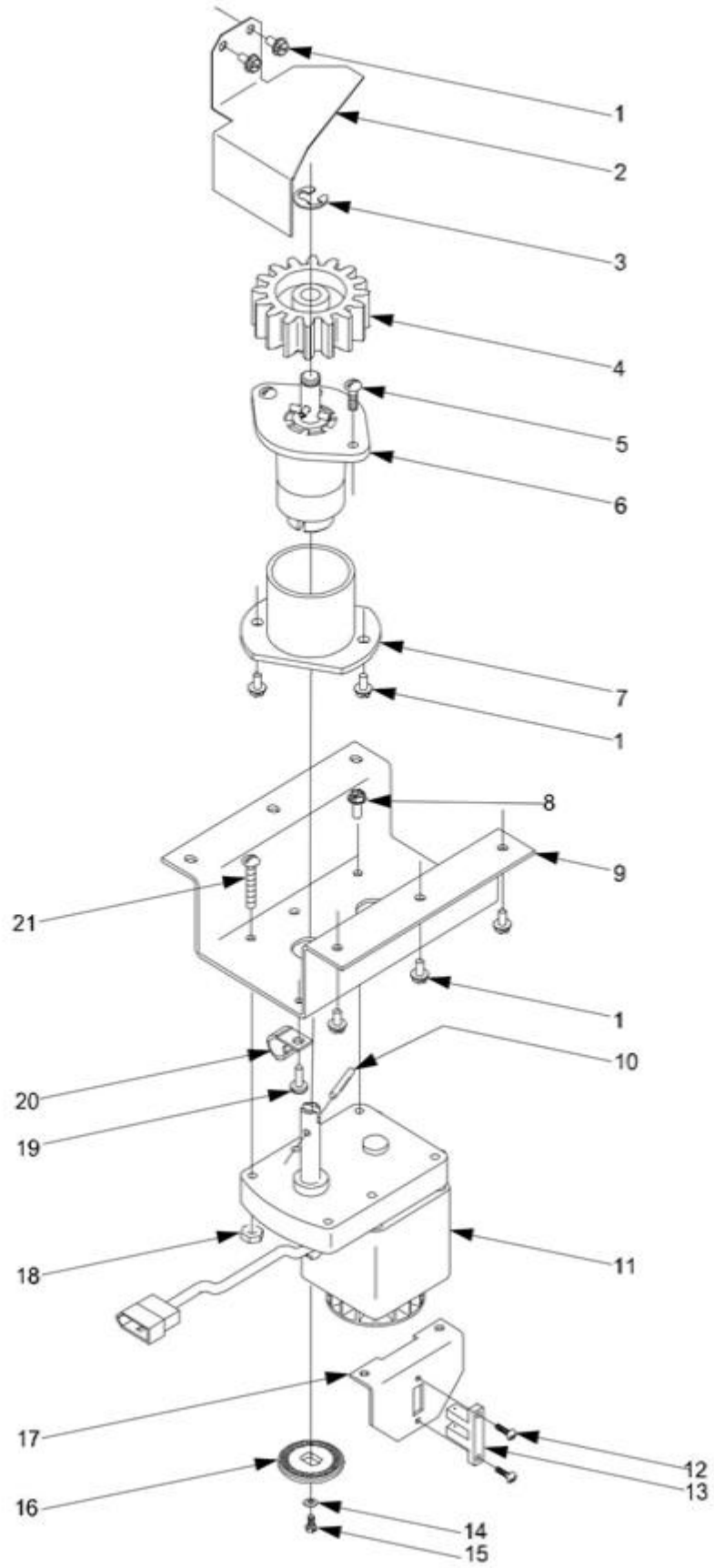
TURRET- TOP			
INDEX	PART NUMBER	DESCRIPTION	QTY
1	103694	TURRET LATCH TOP PLATE	1
2 / 3	103126	SCREW #8-32X.31 HEX HD	16
4	111211	ARM, TOP TURRET LATCH	1
5	104050	SCREW, #6-32 X 3/8 PHIL PH	20
6	111363	COLUMN ASSEMBLY, CENTER	1
7	103691	WALL-SHELF (CLEAR)	5
8	103687	RAIL-TURRET	5
9	103696	PRODUCT SHELF	45
10/11	103700	DIVIDER & RETAINER ASSY	90
12	103686	TOP PLATE-TURRET	1
13	103542	PIN & PLATE ASSEMBLY	1
14	106411	FLANGED OILITE FB810 4	1
15	103695	LOCK TURRET LATCH-TOP	1

TURRET -BOTTOM



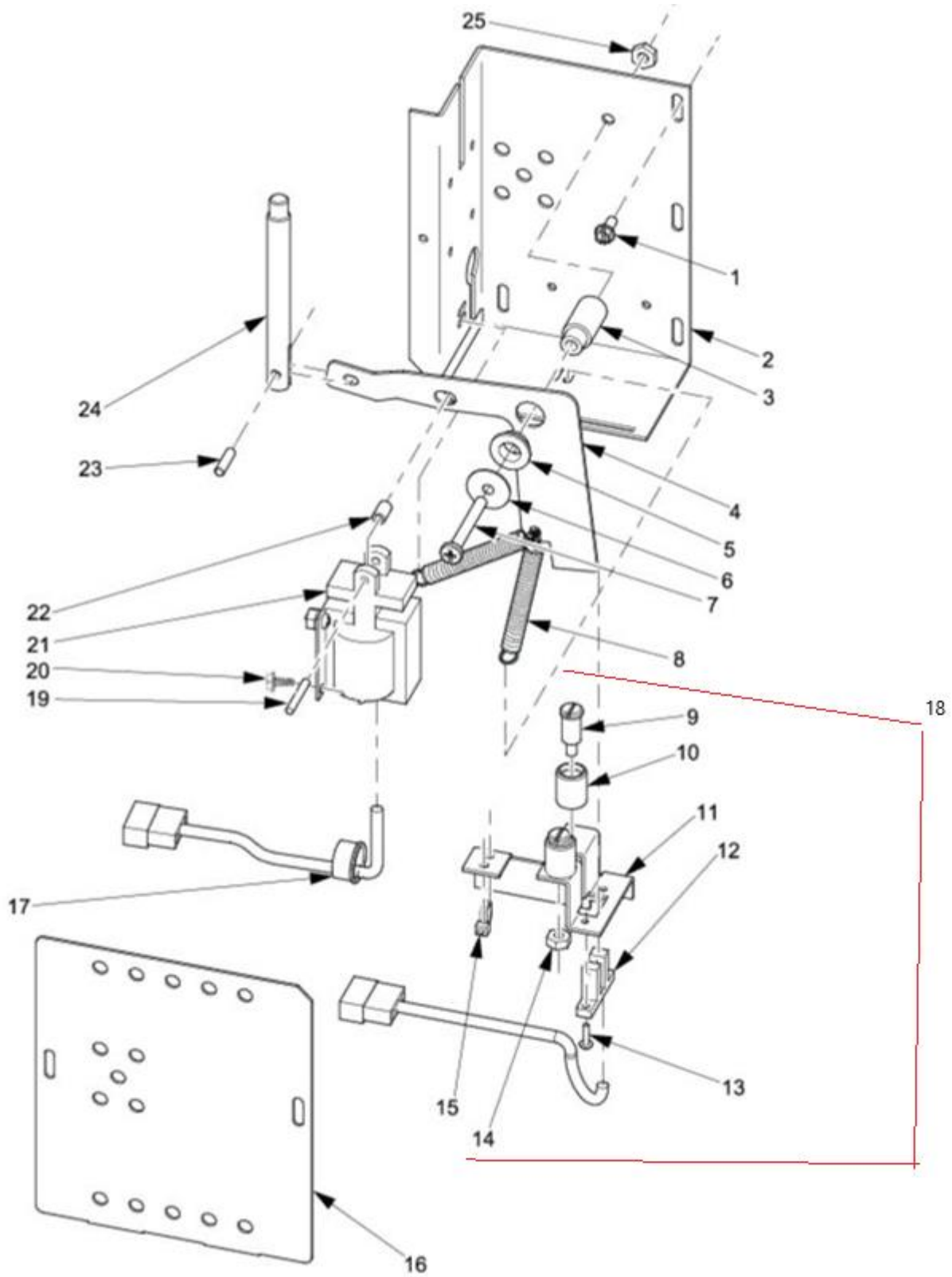
TURRET- BOTTOM			
INDEX	PART NUMBER	DESCRIPTION	QTY
1	103685	GEAR SECTION 5 SEGMENT	5
----	106359	ASSEMBLY SENSOR SWITCH (contains index 2, 18, 20, & 21)	---
2	103705	PROXIMITY SENSOR	1
3	103539	CARRIAGE BOLT - #10-24 X 1.00	10
4	112184	MAGNET MAG	1
5	----	PLATE - STOP PIN - 5 SEGMENT (sold as index #1 only)	---
6	103541	NUT-#10-24 SELF-LOCKING	10
7	111750	COVER-TURRET MOTOR GEAR	1
8	106799	RETAINING RING REINF E TYP.375	1
9	103692	GEAR - DRIVE - BLACK	1
10	106419	SCREW, #8-32 X.50 PHIL PN HD	6
----	108183	BUSHING & DRIVE SHAFT ASSEMBLY (Index 11-14)	----
11	103560	DRIVE SHAFT-UPPER, HOUSING	1
11a	107108	ROLL PIN-1/8 X 13/16 (Not shown)	1
12	106352	PIN .125 DIA.X.875 LG., GROOVE	4
13	103588	DRIVE COUPLING	1
14	106356	DRIVE SHAFT	1
15	103561	DRIVE SHAFT-LOWER	1
16	103547	BUSHING STOP PIN	1
17	107986	STOP PIN ASSY DOMESTIC 115V (SEE TABLE 23 page 35)	1
17a	107982	STOP PIN ASSY FOREIGN 230V only (SEE TABLE 23 page 35)	1
18	103126	SCREW #8-32X.31 HEX HD	10
19	106837	BRACKET, STOP PIN ASSY	1
20	103689	PLATE-SENSOR	1
21	105792	SCREW-#4-40 X 1/4 RHS	2
22	107989	MOTOR DRIVE ASSEMBLY -115V (SEE TABLE 22 page 33)	1
22a	107979	MOTOR DRIVE ASSEMBLY -230V (SEE TABLE 22 page 33)	1
NS	103706	HARNESS-TURRET SWITCH	1

DRIVE MOTOR ASSEMBLY



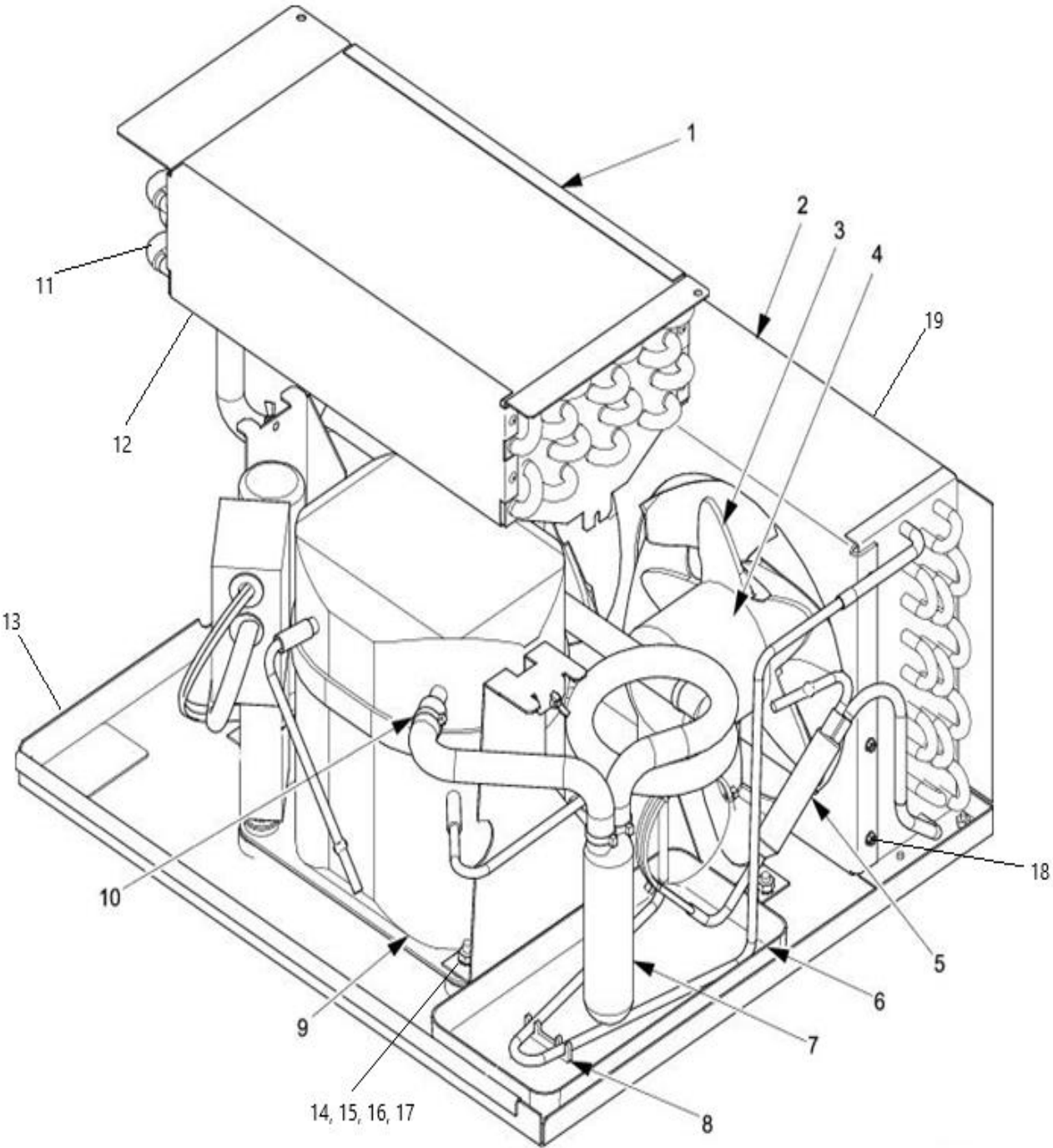
DRIVE MOTOR ASSEMBLY			
INDEX	PART NUMBER	DESCRIPTION	QTY
----	107989	MOTOR DRIVE ASSEMBLY - (115V) (INDEX 8-21)	----
	107979	MOTOR DRIVE ASSEMBLY - (230V only) (INDEX 8-21)	
1	103126	SCREW-#8-32X.31 HEX HD.TF-	10
2	111750	COVER-TURRET-MOTOR-GEAR	1
3	106799	RETAINING RING REINF E TYP	1
4	103692	GEAR-DRIVE-BLACK	1
5	100246	SCREW#8-32 X.50 PHILLIPS-P	2
6	108183	BUSHING & DRIVE SHAFT ASSY (Contents table 21)	1
7	103561	HOUSING-DRIVE SHAFT-LOWER	1
8	108010	SCREW-#8-32X.38 HHS W/LW	4
9	106535	BRACKET - MOTOR MOUNT	1
10	106352	PIN .125 DIA.X.875 LG., GROOVE	1
11	103578	REVERSIBLE MOTOR (115V)	1
11a	106461	REVERSIBLE MOTOR (230V only)	1
12	103523	SCREW, #4-24 X .375 PH Z-P ST	2
13	103708	MOTION DETECTOR ASSY	1
14	106230	SCAVENGER BAR, WASHER	1
15	108012	SCREW, 10-32X3/8 HEX HD	1
16	103577	FOOD DRUM POSITION, ENCODER	1
17	111745	BRACKET-SENSOR MOTOR	1
18	100153	NUT #8-32 KEPS	2
19	107959	SCRW 8-18X1/2 PH PAN	1
20	100863	HARNESS RETAINER	1
21	107735	SCREW-#8-32X1 THS ZINC	2

STOP PIN ASSEMBLY



STOP PIN ASSEMBLY				
INDEX	115V	230V	DESCRIPTION	QTY
----	107986	107982	STOP PIN ASSEMBLY	1
1	100242	100242	SCREW-#8-32 X .31HEX/HD. S	4
2	111214	111214	HOUSING-STOP PIN ASSY	1
3	103698	103698	BUSHING-ACTUATOR-STOP PIN	1
4	103699	103699	LEVER-ACTUATOR-STOP PIN	1
5	103697	103697	BUSHING, ACTUATR STOP PIN.375DIA	1
6	100486	100486	WASHER PLATE SS	1
7	103821	103821	SCREW #10-32 X 1-1/2 PHILLIPS	1
8	106398	106398	SPRING-EXTENSION	2
9	103164	103164	STUD-DRIVE ARM	1
10	105875	105875	ROLLER-DRIVE ARM	1
11	111213	111213	BRACKET- SWITCH OPTO	1
12	103708	103708	ASSY-MOTION DETECTOR	1
13	103523	103523	SCREW, #4-24 X .375 PH Z-P ST	2
14	100153	100153	NUT, #8-32 KEPS	2
15	100512	100512	WIRE TIE #PLT1M-M20	1
16	106554	106554	COVER-STOP PIN ASSY	1
17	100036	100036	BUSHING OPEN/CLOSED .625	1
18	108002	108002	SENSOR STOP PIN (Contains index 9-14)	---
19	106352	106352	GROOVE PIN .125 DIA.X.875 LG.	1
20	105784	105784	SCREW10-32X3/8 HEX W/HD	4
21	103548	103549	SOLENOID ASSEMBLY	1
22	103530	103530	BUSHING RETAINER	
23	103820	103820	ROLL PIN, 5/32 X 5/8 IN/8IN	1
24	103693	103693	STOP PIN	1
25	111982	111982	#10-32 KEPS ZINC PLATE	1

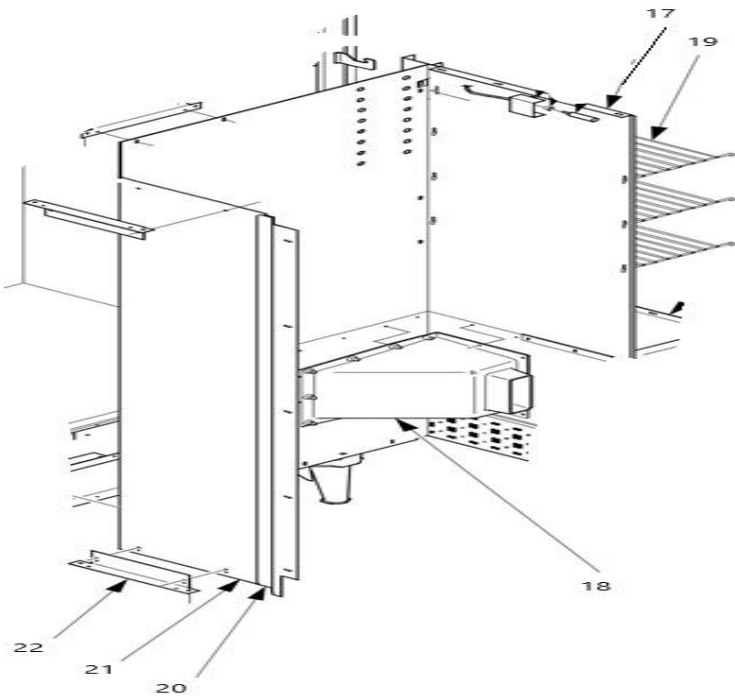
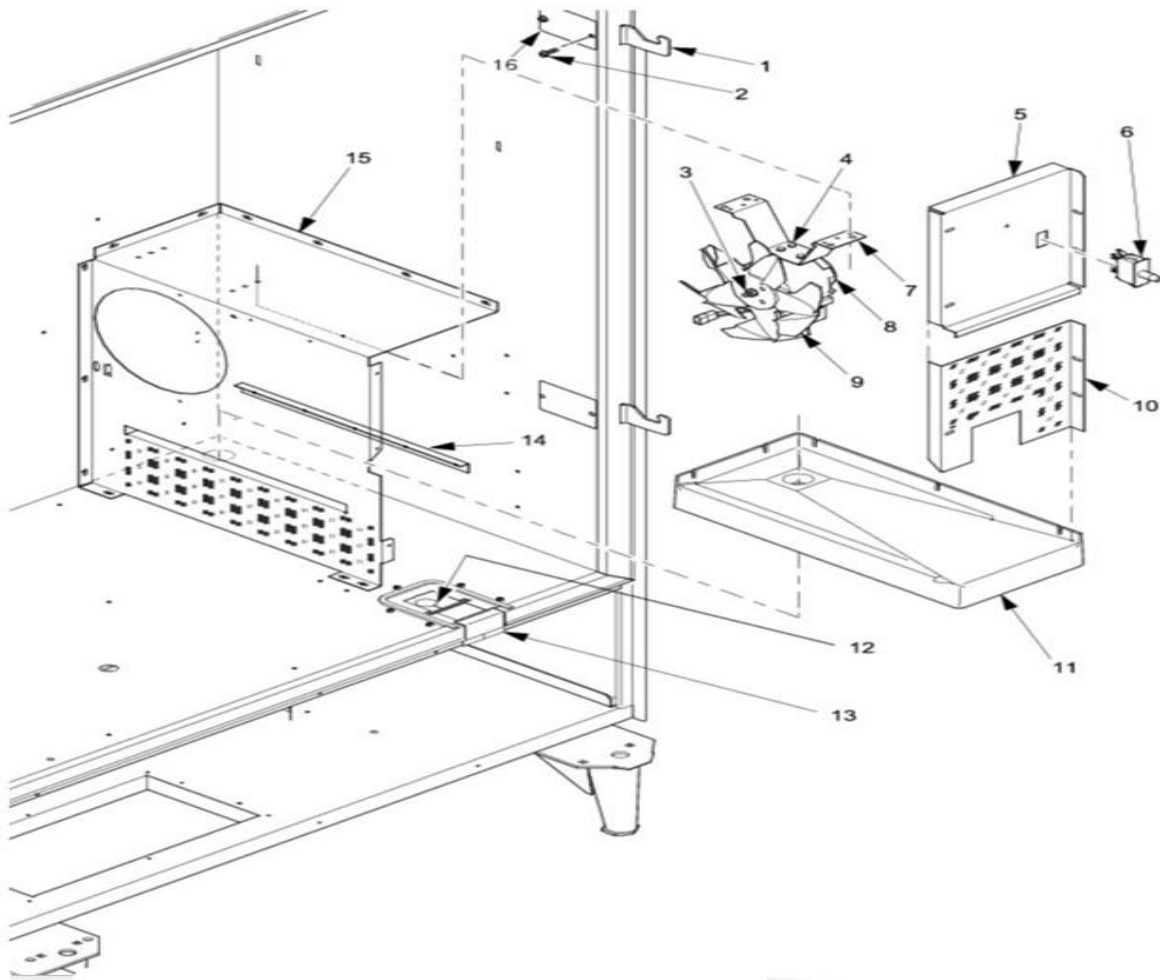
REFRIGERATION
REFRIGERATION COMPONENTS



REFRIGERATION COMPONENTS

INDEX	115V	230V	DESCRIPTION	QTY
----	104972	104973	REFRIGERATION UNIT ASSEMBLY (Ships by pallet-lift gate service)	1
1	113681	113681	EVAPORATOR PLUS PANELS	1
2	101585	101585	CONDENSER, 9 X 17.5 3R7 FP	1
3	101553	101553	BLADE, CONDENSER FAN	2
4	101069	101070	MOTOR CONDENSER FAN	2
5	100707	101070	FILTER/DRIER - REFRIGERANT	1
6	102958	102958	PAN - CONDENSATE BLACK	1
7	101547	101547	ACCUMLTR P-H22-056380-01	1
8	100351	100351	SPACER - COMP. DISCH.TUBE	1
9	101577	101578	COMPRESSOR - R134A	1
10	103498	103498	WIRE TIE - #PLT 1.5IM KB	12
11	101616	101616	EVAPORATOR (ONLY)NO PANELS	1
12	102966	102966	PANEL EVAPORATOR (ONLY)	1
13	101551	101551	BASE/STUD ASSEMBLY - REFRIGERATION UNIT	1
14	109462	109492	NUT, 1/4-20	14
15	100485	100485	WASHER.875 ODX.375 IDX.062	2
16	100117	100117	SLEEVE STEEL GROMMET	4
17	100112	100112	GROMMET 11/16 HEIGHT	4
18	100321	100321	SCREW - #8-18 X .38 - LGM	6
19	103039	103039	SHROUD - CONDENSER - CARDBOARD	1
20	102822	102822	HEAT EXCHANGER ASSEMBLY	1
NS	101551	101551	NUT - WING - #8-32 W/NYLON INSERT	2
NS	106513	106428	BAG COMPRESSOR PARTS	1
NS	104974	104974	ASSEMBLY - FRONT - SHIP - BRACKET - STUD	1
NS	102800	102800	ASSEMBLY - BACK - SHIP - BRACKET - STUD	1
NS	112141	104063	US-20A 12AWG INL GFCI CORD	1
NS	100864	100864	HARNESS COMPRESSOR	1
NS	107988	107988	PANEL ASSEMBLY-EVAPORATOR FAN	1

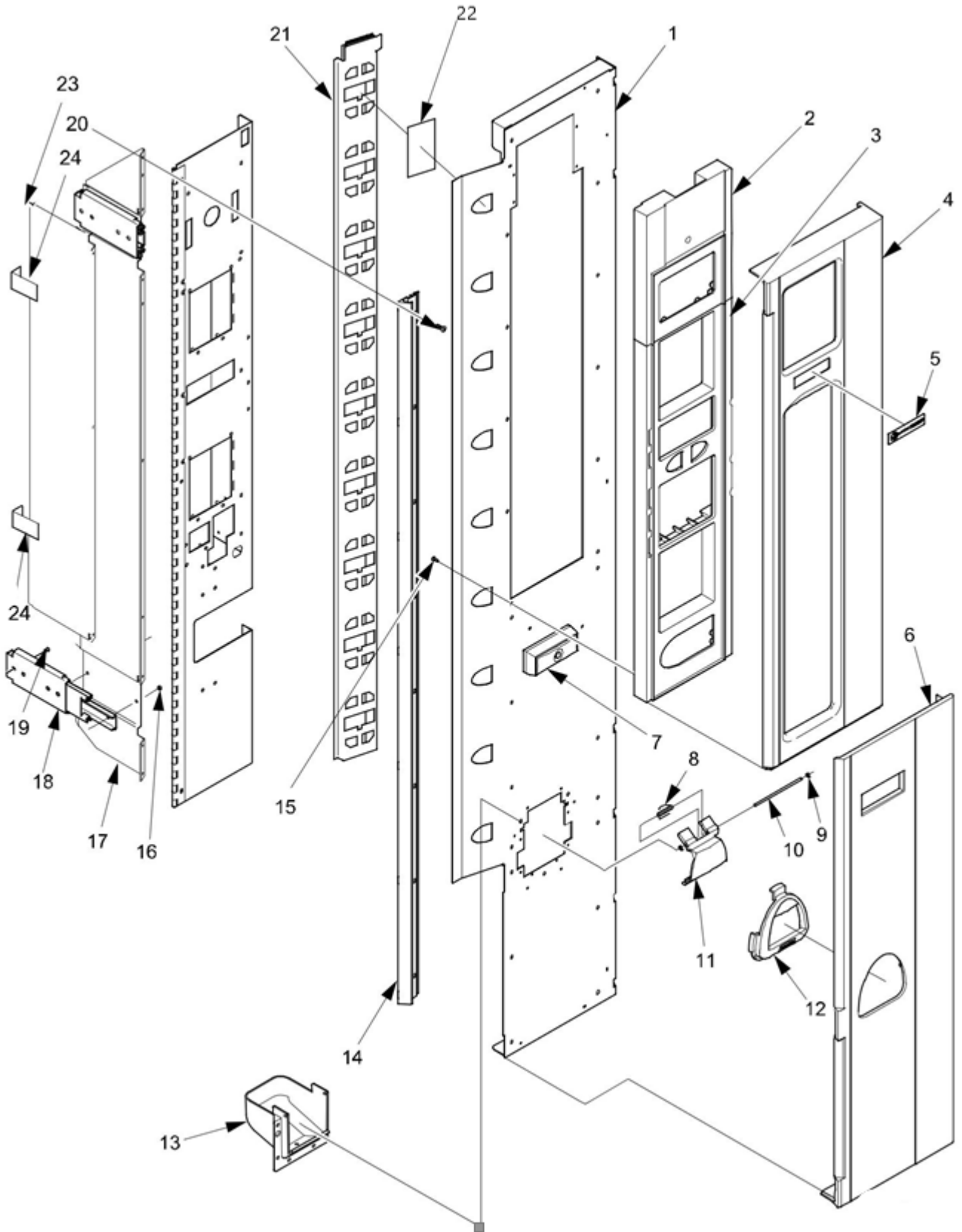
EVAPORATOR MOTOR ASSEMBLY & CABINET INTERIOR



EVAPORATOR MOTOR ASSEMBLY & CABINET INTERIOR

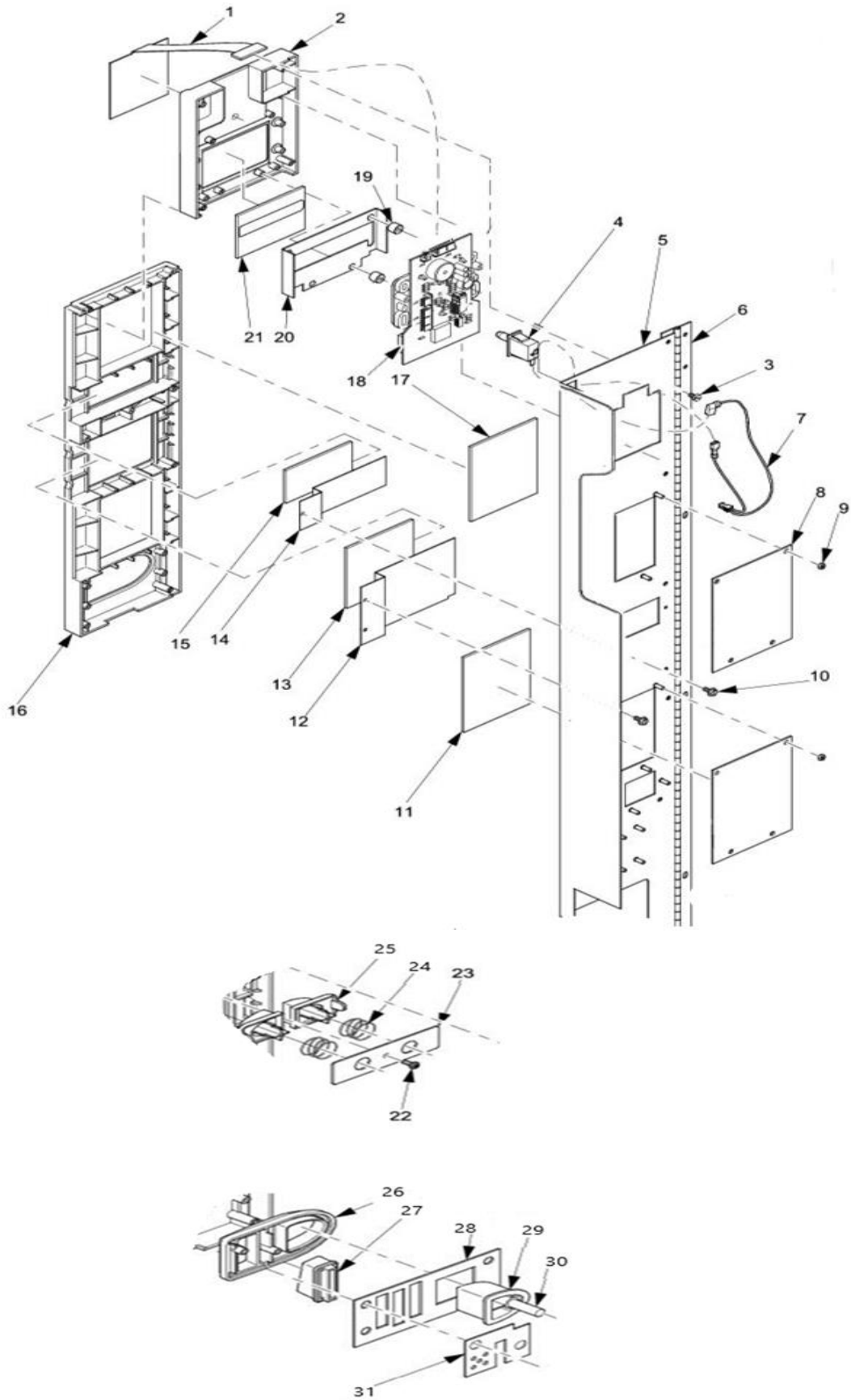
INDEX	115V	230V	DESCRIPTION	QTY
----	108006	108157	EVAPORATOR MOTOR ASSEMBLY (Index 3, 7-9)	----
----	107661	107661	INSUL BLK INTERIOR ASSY	----
----	107765	107765	INSUL WHT BLK INT ASSY	----
1	103571	103571	ARM-LOCK CABINET NOTCH	2
2	105783	105783	SCREW10-32X1/2 HXWH NIBS	4
3	109462	109462	1/4-20 KEPS NUT EXT LW ZP	1
4	100244	100244	SCREW - #8-18 X .38-LGM	4
5	111774	111774	PANEL - FAN - ACCESS	1
6	103121	103123	SWITCH-INTERLOCK	1
7	111765	111765	BRACKET - CONDENSER FAN	1
8	103644	103645	MOTOR - EXT. - CAPAC	1
9	103646	103646	BLADE - EVAPORATOR FAN	1
10	107128	107128	PANEL - PERFORATED	1
11	103563	103563	PAN - ABS - EVAPORATOR DRAIN	1
12	103565	103565	INSULATION-PASSTHRU-CABINET	1
13	103574	103574	RETAINER-CABINET-NOTCH	1
14	111739	111739	BRACKET - ANGLE - EVAPORATOR	1
15	111773	111773	PANEL - EVAPORATOR MOUNT	1
16	111775	111775	COVER-CABINET-LOCK BAR	1
17	102999	102999	TEMPERATURE SENSOR PROBE	1
NS	111749	111749	TEMP SENSOR COVER	1
18	103579	103579	DUCT - AIR - CORNER	1
19	106347	106347	STORAGE- SHELF	3
20	111747	111747	PANEL ASSEMBLY - DISCHARGE - AIR	1
21	103591	103591	PANEL - AIR SUPPLY	1
22	111744	111744	BRACKET - ANGLE	6
NS	106568	104063	POWERCORD, W/BSI PLUG	1
NS	----	104064	POWERCORD, EURO PLUG POWER CORD	1
NS	----	107995	POWERCORD, EXORT AUSTRALIA / NZ	1
NS	107800	107800	BUSHING STRAIN RELIEF-POWERCORD	1
NS	111743	111743	STORAGE WALL	

MONETARY PANEL



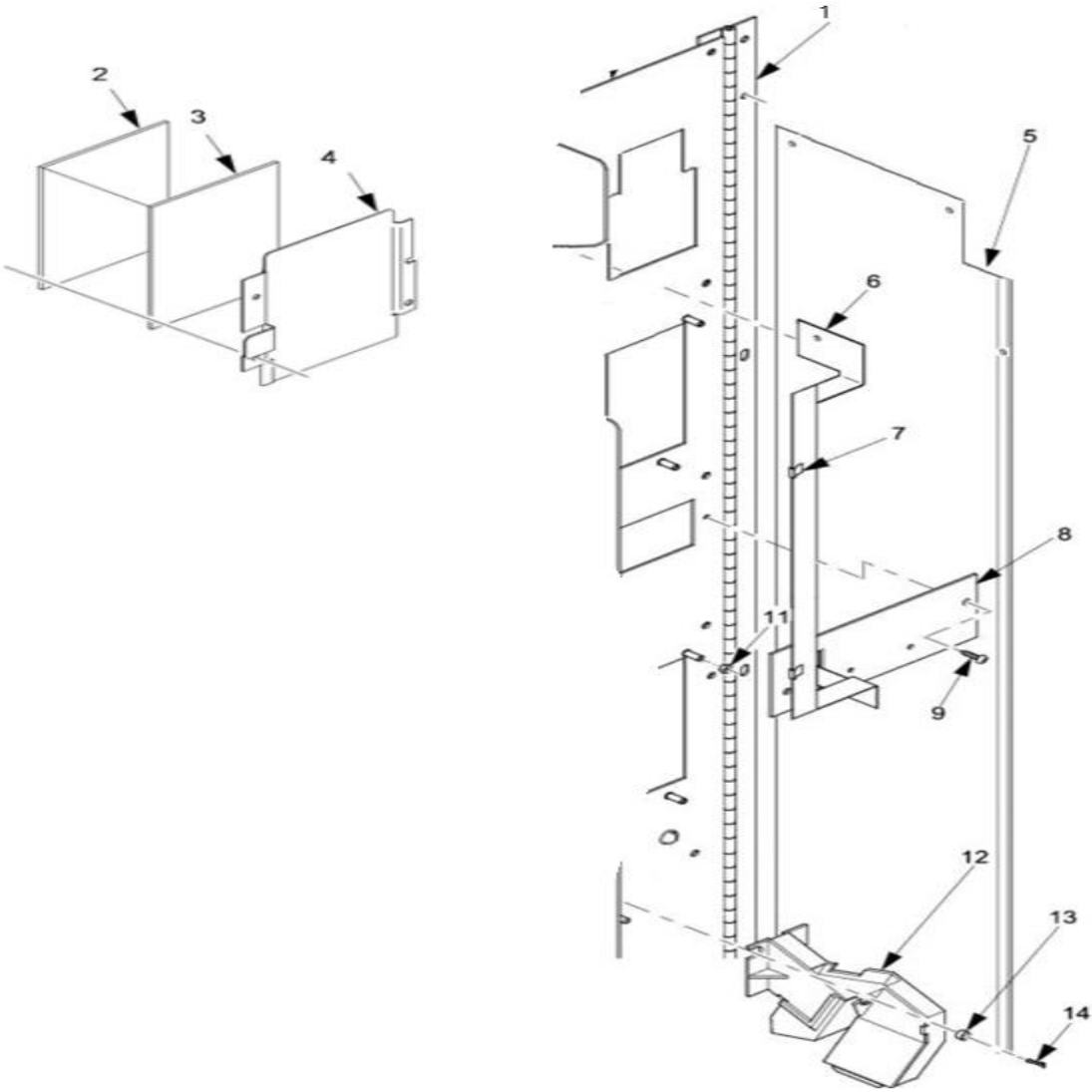
MONETARY PANEL			
INDEX	PART NUMBER	DESCRIPTION	QTY
1	111187	BLACK ACCESS PANEL WELD	1
	111188	PLATINUM ACCESS PNL WELD	1
2	103660	TOP MONETARY SELECT PANEL	1
3	106516	BOTTOM MONETARY SELECT PANEL	1
4	103650	TOP ACCESS PANEL, TRIM	1
5	103611	DECAL LOGO PLATE -432	1
	104158	DECAL LOGO PLATE- 962	1
6	106515	BOTTOM ACCESS TRIM PANEL	1
7	103612	LOCK ASSY-T	1
	103265	LOCK ASY T-DULL CHROME	1
8	103521	SPRING COIN RETURN DOOR	1
9	103508	CLIP, SPEED COMPRESSION RG	2
10	103657	COIN RETURN GATE SHAFT	1
11	103656	GATE COIN RETURN	1
12	103654	COIN RETURN CUP-BEZEL	1
13	103655	COIN CUP RETURN	1
14	103661	SIDE ACCESS PANEL BLACK, TRIM	1
15	103768	SCREW, #6-19 X .38 PHIL PHS T/C	12
16	100153	NUT #8-32 KEPS	4
17	111209	MONETARY SIDE, PANEL	1
18	103674	SLIDE ASSY MONETARY	2
19	106725	SCREW, 10-32X1/4 PHS FHS	8
20	100246	SCREW, 8-32X.50 HX HD T/F BLK	8
21	103673	PRICE DISPLAY ASSEMBLY (Consist of 3 board)	1
22	103659	INSERT DISPLAY LENS	9
23	103670	COVER, MONETARY HARNESS	1
24	111202	BRACKET, LOWER MONETARY COVER	2

UPPER MONETARY



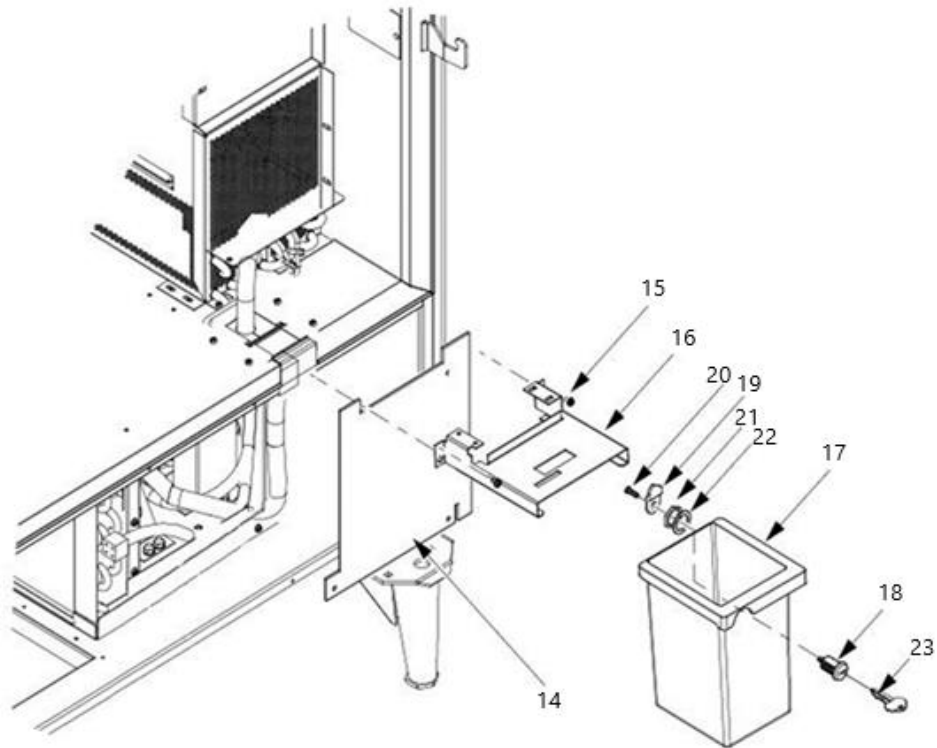
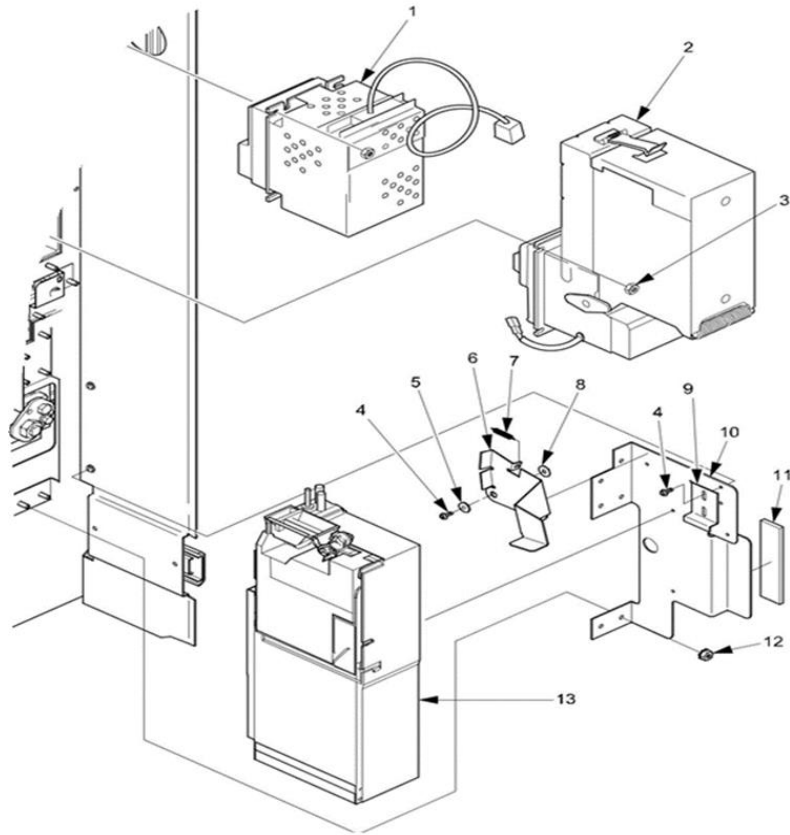
UPPER MONETARY			
INDEX	PART NUMBER	DESCRIPTION	QTY
1	107125	SERVICE KEYPAD ASSEMBLY	1
2	103660	TOP MONETARY SELECT PANEL	1
3	103125	SCREW, #8-10X.38 HEX HD.TF	12
4	103822	SWITCH, SERVICE LIGHT 1DM2	1
5	112978	ASSY, MONETARY DOOR WELD	1
6	100120	MONETARY PANEL HINGE (Not sold separately)	1
7	103188	MONETARY DOOR SWITCH-JUMPER	1
8	111203	PLATE-BACKING-INSERT	1
9	100153	NUT #8-32 X .50 KEPS ZINC	8
10	103126	SCREW-#8-32X.31 HEX HD.TF-BLK.	3
11	103181	INSTR UPPER BLANK (For use with no validator only)	1
12	111200	PLATE-BACKING-LOWER-REMOVABLE	2
13	106527	INSERT INSTR.-LOWER (115V)	1
14	N/A	PLATE-BACKING-UPPER-REMOVABLE	1
15	106518	INSERT INSTR.-UPPER (115V)	1
16	106516	SELECTION PANEL-BOTTOM	1
17	103181	INSTR UPPER BLANK (For use with no validator only)	1
18	111053	DISPLAY, PCB ASSY	1
19	106520	SPACER, DISPLAY	4
20	111198	DISPLAY LENS, RETAINER	1
21	103649	DISPLAY INSERT	1
22	103584	SCREW-#6-19 X .31 PHIL.PHS.T/C	1
23	111199	RETAINER-DIRECTION-BUTTONS	1
24	105930	SPRING-PUSH BUTTON	2
25	103648	BUTTON-TURRET	2
26	103653	BEZEL-COIN INSERT	1
27	103652	INSERT-COIN	1
28	111204	PANEL-BACKUP-MONETARY	1
29	103561	BUTTON-COIN RETURN	1
30	106534	SHAFT-RETURN BUTTON	1
31	106019	COIN BLOCK-50 CENTS	1
NS	103179	INSTR-LOWER-ENGLISH	1
NS	104283	LABEL, PRESS TO VIEW SELECTN	
NS	106432	DIRECTION SWITCH	

INTERIOR MONETARY



INTERIOR MONETARY			
INDEX	PART NUMBER	DESCRIPTION	QTY
1	100120	MONETARY PANEL HINGE (Not sold separately)	1
2	106525	LENS, UPPER POP	1
3	103667	UPPER GRAPHICS, POP	1
4	106532	PLATE, BACKUP UPPER POP	1
5	111209	PANEL-SIDE, MONETARY	1
6	104274	MEMBRANE TURRET, SWITCH	1
7	103531	CABLE CLIP	2
8	106517	MEMBRANE SWITCH, PLATE	1
9	107959	SCRW 8-18X1/2 PH PAN	2
11	100153	NUT #8-32 KEPS	2
12	103178	COIN CHUTE ASSEMBLY	1
13	104122	FERRULE	2
14	106264	SCREW-HILO 7 19 X 3/8 HEX WASHER	2

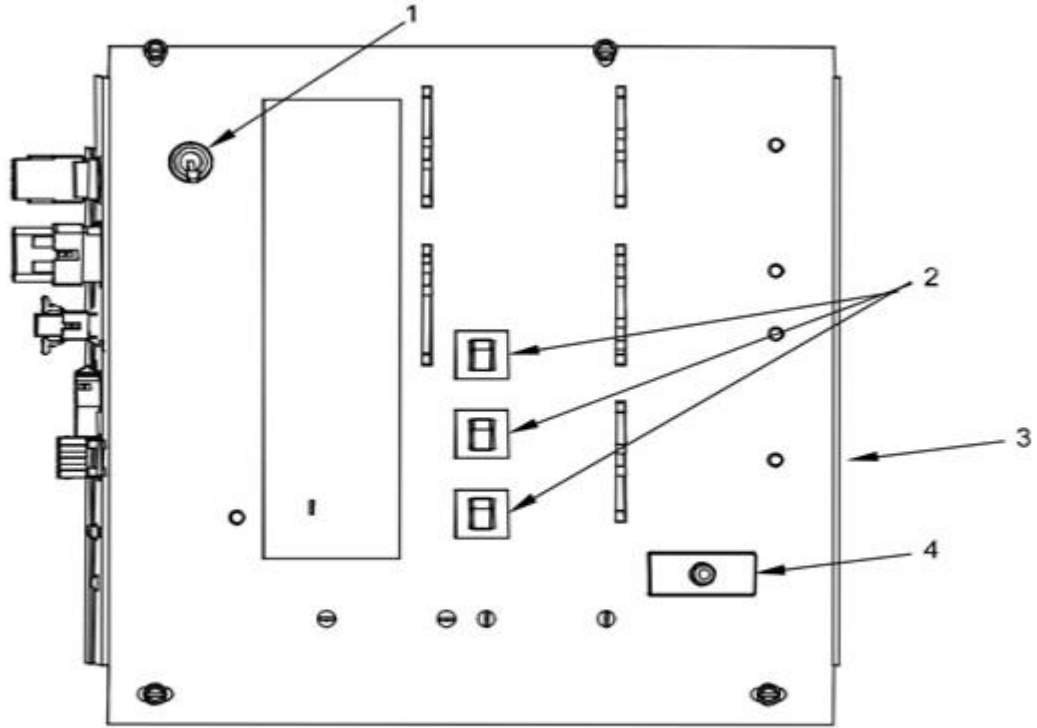
MONETARY OPTIONS & COIN BOX



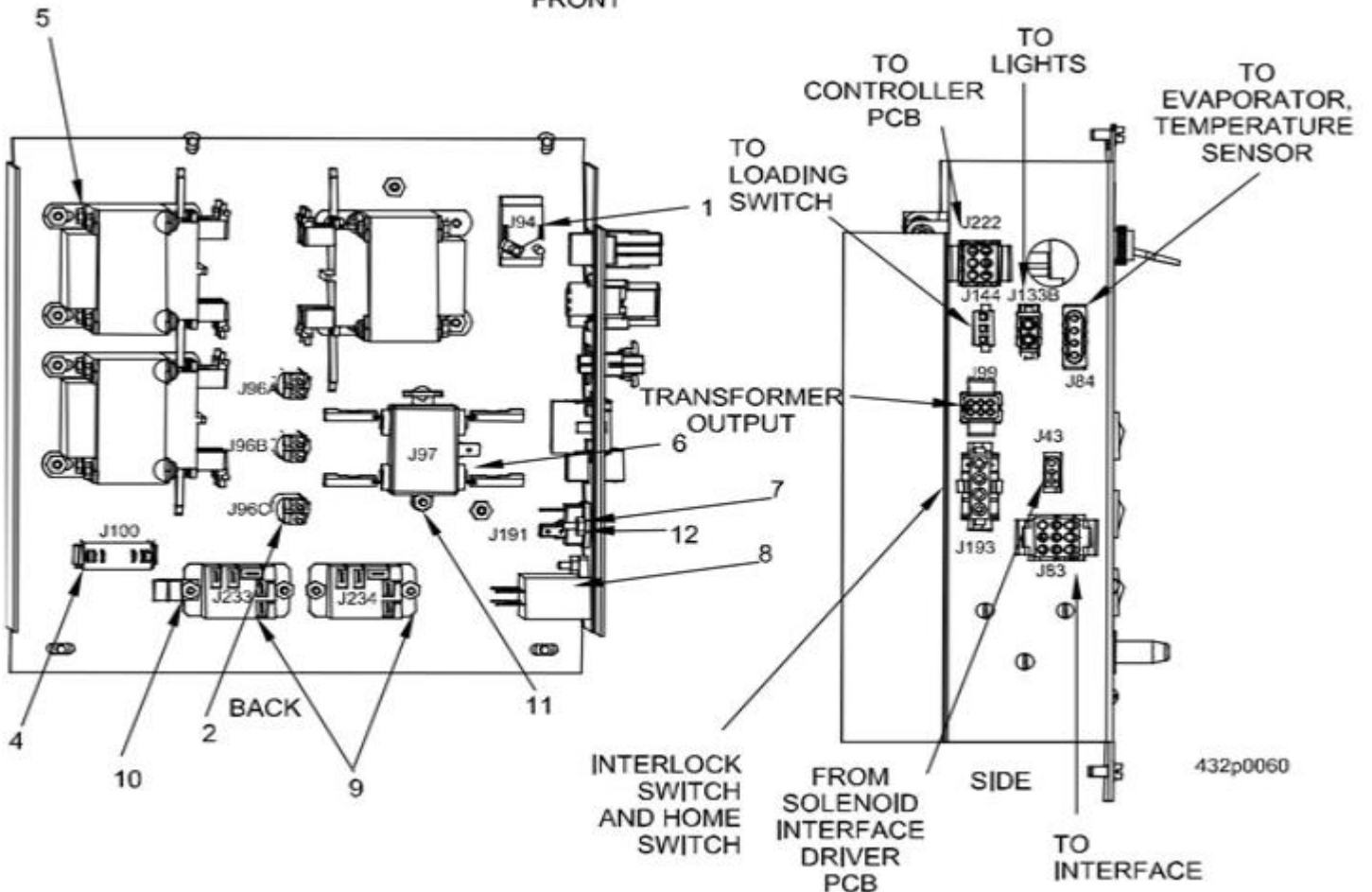
MONETARY OPTIONS & COIN BOX			
INDEX	PART NUMBER	DESCRIPTION	QTY
1	Consult factory	CARD READER	OPT
2	Consult factory	TALOS VALIDATOR/RECYCLER	OPT
3	100153	NUT #8-32 KEPS ZINC PLATE	8
4	104051	SCREW #8-32 X 3/8 ACORN HEX HD	6
5	103502	SPACER-RELEASE ARM	1
6	103169	ARM-SCAVENGER	1
7	103113	SPRING-SHELF RESET	1
8	106230	WASHER-SCAVENGER BAR	1
9	103828	CABLE CLAMP	1
10	111196	BRACKET-COIN MECH.	1
11	106262	MAGNET-RETAINR-COIN CHANGER KB	1
12	100153	NUT #8-32 KEPS ZINC PLATE	14
13	Consult factory	GRYPHON CHANGER	OPT
14	103647	BRACKET-REFRIG PLASTIC CARDBOARD	1
15	103126	SCREW #8-32X.31 HEX HD	5
16	111742	COIN BOX MOUNT, BRACKET	1
17	101420	PLASTIC COIN BOX	----
----	108163	MONEY BOX ASSY (Contains Index 18-23)	1
18	103112	LOCK, #1801 MONEY BOX KA NV407	1
19	103126	SCREW #8-32X.31 HEX HD	1
20	----	LOCK BARREL CAM #2693 (Not sold separately)	1
21/22	103501	LOCK BARREL WASHER #2693	1
23	103500	CHICAGO LK# 1801 KEY	1

MISCELLANEOUS

POWER PANEL ASSEMBLY 115V & 230V

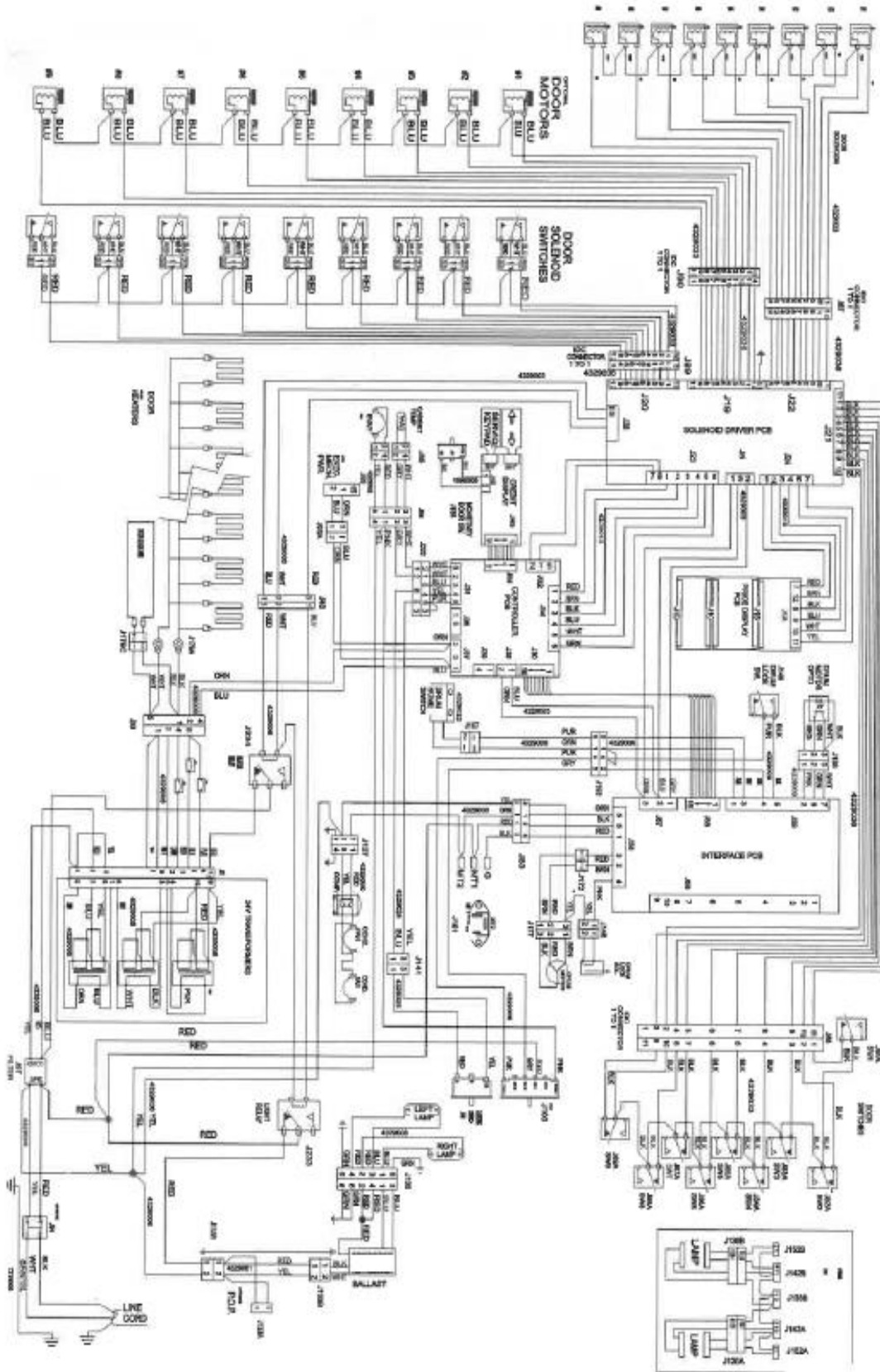


FRONT



POWER PANEL ASSEMBLY 115V & 230V				
INDEX	115V	230V	DESCRIPTION	QTY
----	103592	103593	POWER PANEL ASSEMBLY	----
1	107791	107791	TOGGLE DPST 20AMP SWITCH	1
2	107820	107820	4 AMP CIRCUIT BREAKER (Sold only as part of the power panel assy)	3
3	----	----	POWER PANEL FRONT (Sold only as the power panel assy)	1
4	112061	112061	SWITCH - INTERLOCK	1
5	107806	107806	24V DUAL PIR .187 TERM (Sold only as part of the power panel assy)	1
6	104060	104060	INTERFERENCE FILTER	1
7	104054	104054	TRIAC - 35A - 600V	1
8	107802	107803	MOTOR RUN 10UF CAPACITOR (Sold only as part of the power panel assy)	1
9	104065	104065	RELAY, SPDT.24VDC PANEL MOUNT	2
10	105653	105663	NUT #6-32 KEPS ZINC PLATE	6
11	100153	100153	NUT #8-32 KEPS ZINC PLATE	8
12	107728	107728	#6-32X3/8 RHS MACH	6
Not Shown	----	107980	REAR PANEL ASSY	1
Not Shown	----	111741	COVER-CONTROL-POWER-REAR	1
Not Shown	----	104061	FILTER-POWER LINE-EMI	1
Not Shown	----	----	HARNESS-POWER PNL-FRT DC (Part of part 103592 &103593)	1
Not Shown	103712	103712	HARNESS DOOR AC	1
Not Shown	104037	103711	HARNESS PWR CORD TO PNL	1
Not Shown	111496	111496	POWER CORD PANEL COVER	1

WIRING DIAGRAM AND HARNESSING



WIRING DIAGRAM AND HARNESSING		
INDEX	PART NUMBER	DESCRIPTION
----	103684	ASSY PCB MAIN CONTROLLER
----	103681	PCB ASSY INTERFACE 432
----	104067	PCB ASSY-EXECUTIVE INTERFACE
J1, J1A, J2, J34	103703	HARNESS, PRICE DISPLAY
J3, J5, J37, J43, J57, J93A, J98, J99, J179A, J179B, J179C,	103715	HARNESS, POWER PANEL TO PCB
J4	No longer available	HARNESS-BALLST TO LAMP-230V
J27	104378	HARNESS, EXEC. COIN LONG
J30, J55	103709	16 CONDUCTOR CABLE ASY, RIBBON
J31, J222	103704	HARNESS, 24V TEMP & SWITCH
J33, J45,	103192	HARN CONTROL TO DISPLAY
J36	103213	INTERFACE DEX HARNESS
J38, J82, J94, J144	103706	HARNESS, TURRET SWITCH
J39, J200	103212	HARNESS MDB COIN & VAL
J40	N/A	PWR AY-120V DUMB COIN-15A
J41	112354	HARNESS, SERIAL VALIDATOR LONG
J48, J156,	103188	JUMPER, MONETARY DOOR SWITCH
J49	107125	SERVICE KEYPAD ASSY
J56	103710	JUMPER, SWITCH&SOLENOIDS-POWER
J58, J148, J172, J177	103712	HARNESS DOOR AC
J59, J107, J149, J193	103707	HARNESS - CABINET DC
J81	106556	HARNESS-TRANSFORMERS
J81A, J82A, J83A, J84A, J85A, J86A, J86A, J87A, J88A, J89A,	106562	HARNESS VEND DOOR SWITCHES
J89	110545	HARNESS - LAMP TO BALLAST - (230V)
J93B, J151,	104378	HARNESS-EXEC.COIN-LONG
J100, J126, J191, J97	106557	HARNESS-POWER PNL
J127	100864	HARNESS - COMPRESSOR
J131	103714	HARNESS-EVAP FAN & TEMP
J133A, J152A, J152B	106558	HARNESS - POP - BALLAST
J133B	106555	HARNESS - LAMP TO POWER PANEL
J134	104437	HARNESS LED LIGHT
J135	110545	230V HARNESS LIGHTING
J136A, J136B, J142A, J142B	106558	HARNESS, POP BALLAST

LABELS	
PART NUMBER	DESCRIPTION
103136	LABEL, INSTR-ALT \$1 & \$5 -EX
105956	INSTR.SHEET-COIN CHUTE & BRKT.
107978	LABEL, PKG-ENGL-U.K.-230V
105908	LABEL, CAUTION, STATIC/ELECT
103193	LABEL, QUALITY UNIVERSAL
112811	LABEL-IDENTIFICATION #1
112812	LABEL-ID #2
112813	LABEL-ID #3
112814	LABEL-ID #4
112815	LABEL-IDENTIFICATION #5
103534	LABEL, CAUTION
103586	LABEL, LED & EPROM ENGLISH
103677	PLATE, INSERT INSTRUTN UPPER
104283	LBL, PRESS TO VIEW SELECTION
103590	LBL, POWER PANEL 230V ENGLISH
103589	LBL, POWER PNL 115V ENG